



ELECTRONIC COPY

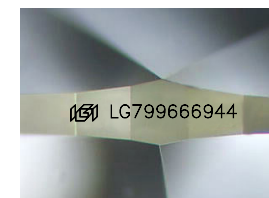
LG799666944
Report verification at igi.org



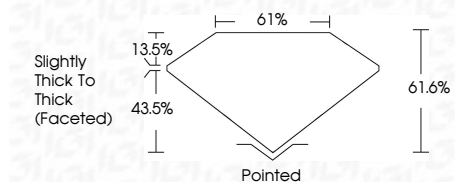
June 12, 2026
IGI Report Number **LG799666944**
Description **LABORATORY GROWN DIAMOND**
Shape and Cutting Style **OVAL BRILLIANT**
Measurements **9.36 X 6.43 X 3.96 MM**

GRADING RESULTS

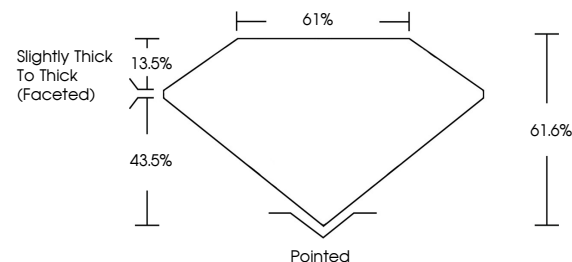
Carat Weight **1.50 CARAT**
Color Grade **D**
Clarity Grade **FLAWLESS**



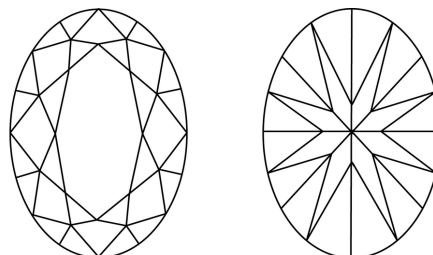
Sample Image Used



PROPORTIONS



CLARITY CHARACTERISTICS



KEY TO SYMBOLS

Red symbols indicate internal characteristics.
Green symbols indicate external characteristics.

COLOR

D E F G H I J Faint Very Light Light

CLARITY

FL	IF	VS ¹⁻²	VS ¹⁻²	SI ¹⁻²	I ¹⁻³
Flawless	Internally Flawless	Very Very Slightly Included	Very Slightly Included	Slightly Included	Included

ADDITIONAL GRADING INFORMATION

Polish **EXCELLENT**
Symmetry **EXCELLENT**
Fluorescence **NONE**
Inscription(s) **IGI LG799666944**
Comments: As Grown - No indication of post-growth treatment.
This Laboratory Grown Diamond was created by High Pressure High Temperature (HPHT) growth process.
Type II



IGI



June 12, 2026
IGI Report No LG799666944
OVAL BRILLIANT
9.36 X 6.43 X 3.96 MM
Carat Weight 1.50 CARAT
Color Grade D
Clarity Grade FLAWLESS
Depth 43.5%
Table 61%
Girdle 13.5% (Slightly Thick To Thick (Faceted))
Culet Pointed
Polish EXCELLENT
Symmetry EXCELLENT
Fluorescence NONE
Inscription(s) IGI LG799666944

Comments: As Grown - No indication of post-growth treatment.
This Laboratory Grown Diamond was created by High Pressure High Temperature (HPHT) growth process.
Type II