



May 19, 2026

**IGI Report Number** LG799666746  
**ROUND BRILLIANT**  
**LABORATORY GROWN DIAMOND**  
**5.54 - 5.57 X 3.38 MM**

**Carat Weight** 0.63 CARAT  
**Color Grade** FANCY INTENSE YELLOW

**Clarity Grade** VS 1  
**Cut Grade** IDEAL

**Polish** EXCELLENT  
**Symmetry** EXCELLENT

**Fluorescence** NONE  
**Inscription(s)** IGI LG799666746

**Comments:** As Grown - No indication of post-growth treatment. This Laboratory Grown Diamond was created by High Pressure High Temperature (HPHT) growth process.

**LABORATORY GROWN DIAMOND REPORT**

May 19, 2026

IGI Report Number

LG799666746

Description

LABORATORY GROWN DIAMOND

Shape and Cutting Style

ROUND BRILLIANT

Measurements

5.54 - 5.57 X 3.38 MM

**GRADING RESULTS**

Carat Weight

0.63 CARAT

Color Grade

FANCY INTENSE YELLOW

Clarity Grade

VS 1

Cut Grade

IDEAL

**ADDITIONAL GRADING INFORMATION**

Polish

EXCELLENT

Symmetry

EXCELLENT

Fluorescence

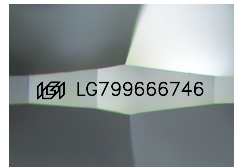
NONE

Inscription(s)

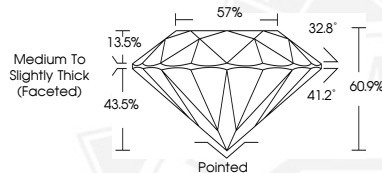
IGI LG799666746

**Comments:** As Grown - No indication of post-growth treatment.

This Laboratory Grown Diamond was created by High Pressure High Temperature (HPHT) growth process.



Sample Image Used



May 19, 2026

**IGI Report Number** LG799666746  
**ROUND BRILLIANT**  
**LABORATORY GROWN DIAMOND**  
**5.54 - 5.57 X 3.38 MM**

**Carat Weight** 0.63 CARAT  
**Color Grade** FANCY INTENSE YELLOW

**Clarity Grade** VS 1  
**Cut Grade** IDEAL

**Polish** EXCELLENT  
**Symmetry** EXCELLENT

**Fluorescence** NONE  
**Inscription(s)** IGI LG799666746

**Comments:** As Grown - No indication of post-growth treatment. This Laboratory Grown Diamond was created by High Pressure High Temperature (HPHT) growth process.



THIS DOCUMENT WAS PRODUCED WITH THE FOLLOWING SECURITY MEASURES: SPECIAL DOCUMENT PAPER, INK SCREENS, WATERMARK BACKGROUND DESIGNS, HOLOGRAM AND OTHER SECURITY FEATURES NOT LISTED AND DO EXCEED DOCUMENT SECURITY INDUSTRY GUIDELINES.