



LABORATORY GROWN DIAMOND REPORT

May 14, 2026
 IGI Report Number **LG799666584**
 Description **LABORATORY GROWN DIAMOND**
 Shape and Cutting Style **ROUND BRILLIANT**
 Measurements **5.62 - 5.65 X 3.45 MM**

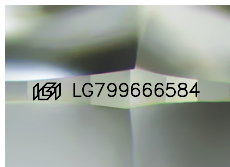
GRADING RESULTS

Carat Weight **0.67 CARAT**
 Color Grade **FANCY VIVID YELLOW**
 Clarity Grade **VVS 1**
 Cut Grade **IDEAL**

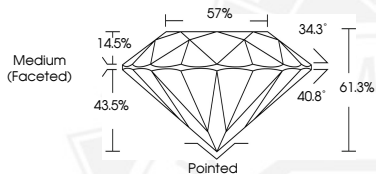
ADDITIONAL GRADING INFORMATION

Polish **VERY GOOD**
 Symmetry **EXCELLENT**
 Fluorescence **NONE**
 Inscription(s) **IGI LG799666584**

Comments: As Grown - No indication of post-growth treatment. This Laboratory Grown Diamond was created by High Pressure High Temperature (HPHT) growth process.



Sample Image Used



May 14, 2026

IGI Report Number **LG799666584**
ROUND BRILLIANT
LABORATORY GROWN DIAMOND
5.62 - 5.65 X 3.45 MM

Carat Weight **0.67 CARAT**
 Color Grade **FANCY VIVID YELLOW**
 Clarity Grade **VVS 1**
 Cut Grade **IDEAL**
 Polish **VERY GOOD**
 Symmetry **EXCELLENT**
 Fluorescence **NONE**
 Inscription(s) **IGI LG799666584**

Comments: As Grown - No indication of post-growth treatment. This Laboratory Grown Diamond was created by High Pressure High Temperature (HPHT) growth process.



May 14, 2026

IGI Report Number **LG799666584**
ROUND BRILLIANT
LABORATORY GROWN DIAMOND
5.62 - 5.65 X 3.45 MM

Carat Weight **0.67 CARAT**
 Color Grade **FANCY VIVID YELLOW**
 Clarity Grade **VVS 1**
 Cut Grade **IDEAL**
 Polish **VERY GOOD**
 Symmetry **EXCELLENT**
 Fluorescence **NONE**
 Inscription(s) **IGI LG799666584**

Comments: As Grown - No indication of post-growth treatment. This Laboratory Grown Diamond was created by High Pressure High Temperature (HPHT) growth process.



THIS DOCUMENT WAS PRODUCED WITH THE FOLLOWING SECURITY MEASURES: SPECIAL DOCUMENT PAPER, INK SCREENS, WATERMARK, BACKGROUND DESIGNS, HOLOGRAM AND OTHER SECURITY FEATURES NOT LISTED AND DO EXCEED DOCUMENT SECURITY INDUSTRY GUIDELINES.