



LABORATORY GROWN DIAMOND REPORT

May 15, 2026
 IGI Report Number **LG799665967**
 Description **LABORATORY GROWN DIAMOND**
 Shape and Cutting Style **PRINCESS CUT**
 Measurements **5.32 X 5.27 X 3.60 MM**

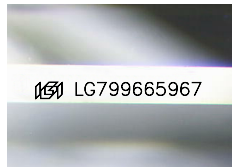
GRADING RESULTS

Carat Weight **0.90 CARAT**
 Color Grade **FANCY INTENSE YELLOW**
 Clarity Grade **VVS 2**

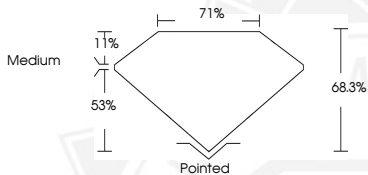
ADDITIONAL GRADING INFORMATION

Polish **VERY GOOD**
 Symmetry **VERY GOOD**
 Fluorescence **VERY SLIGHT**
 Inscription(s) **IGI LG799665967**

Comments: This Laboratory Grown Diamond was created by Chemical Vapor Deposition (CVD) growth process.



Sample Image Used



May 15, 2026
 IGI Report Number **LG799665967**
PRINCESS CUT
LABORATORY GROWN DIAMOND
5.32 X 5.27 X 3.60 MM
 Carat Weight **0.90 CARAT**
 Color Grade **FANCY INTENSE YELLOW**
 Clarity Grade **VVS 2**
 Polish **VERY GOOD**
 Symmetry **VERY GOOD**
 Fluorescence **VERY SLIGHT**
 Inscription(s) **IGI LG799665967**
 Comments: This Laboratory Grown Diamond was created by Chemical Vapor Deposition (CVD) growth process.



May 15, 2026
 IGI Report Number **LG799665967**
PRINCESS CUT
LABORATORY GROWN DIAMOND
5.32 X 5.27 X 3.60 MM
 Carat Weight **0.90 CARAT**
 Color Grade **FANCY INTENSE YELLOW**
 Clarity Grade **VVS 2**
 Polish **VERY GOOD**
 Symmetry **VERY GOOD**
 Fluorescence **VERY SLIGHT**
 Inscription(s) **IGI LG799665967**
 Comments: This Laboratory Grown Diamond was created by Chemical Vapor Deposition (CVD) growth process.



THIS DOCUMENT WAS PRODUCED WITH THE FOLLOWING SECURITY MEASURES: SPECIAL DOCUMENT PAPER, INK SCREENS, WATERMARK, BACKGROUND DESIGNS, HOLOGRAM AND OTHER SECURITY FEATURES NOT LISTED AND DO EXCEED DOCUMENT SECURITY INDUSTRY GUIDELINES.