



May 15, 2026

IGI Report Number **LG799665946**

**EMERALD CUT
LABORATORY GROWN DIAMOND**

6.05 X 4.09 X 2.74 MM

Carat Weight **0.65 CARAT**
Color Grade **FANCY BROWN**
Clarity Grade **VVS 2**
Polish **EXCELLENT**
Symmetry **EXCELLENT**
Fluorescence **NONE**
Inscription(s) **IGI LG799665946**

Comments: This Laboratory Grown Diamond was created by Chemical Vapor Deposition (CVD) growth process. Indications of post-growth treatment.

LABORATORY GROWN DIAMOND REPORT

May 15, 2026

IGI Report Number

LG799665946

Description

LABORATORY GROWN DIAMOND

Shape and Cutting Style

EMERALD CUT

Measurements

6.05 X 4.09 X 2.74 MM

GRADING RESULTS

Carat Weight

0.65 CARAT

Color Grade

FANCY BROWN

Clarity Grade

VVS 2

ADDITIONAL GRADING INFORMATION

Polish

EXCELLENT

Symmetry

EXCELLENT

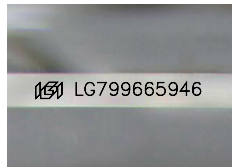
Fluorescence

NONE

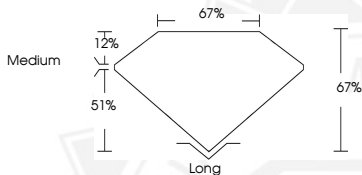
Inscription(s)

IGI LG799665946

Comments: This Laboratory Grown Diamond was created by Chemical Vapor Deposition (CVD) growth process. Indications of post-growth treatment.



Sample Image Used



May 15, 2026

IGI Report Number **LG799665946**

EMERALD CUT

**LABORATORY GROWN DIAMOND
6.05 X 4.09 X 2.74 MM**

Carat Weight **0.65 CARAT**
Color Grade **FANCY BROWN**
Clarity Grade **VVS 2**
Polish **EXCELLENT**
Symmetry **EXCELLENT**
Fluorescence **NONE**
Inscription(s) **IGI LG799665946**

Comments: This Laboratory Grown Diamond was created by Chemical Vapor Deposition (CVD) growth process. Indications of post-growth treatment.



THIS DOCUMENT WAS PRODUCED WITH THE FOLLOWING SECURITY MEASURES: SPECIAL DOCUMENT PAPER, INK SCREENS, WATERMARK, BACKGROUND DESIGNS, HOLOGRAM AND OTHER SECURITY FEATURES NOT LISTED AND DO EXCEED DOCUMENT SECURITY INDUSTRY GUIDELINES.