



May 15, 2026

IGI Report Number LG799665941
**SQUARE CUSHION MODIFIED
BRILLIANT**

**LABORATORY GROWN DIAMOND
5.57 X 5.47 X 3.50 MM**

Carat Weight 0.86 CARAT
Color Grade FANCY BROWN
Clarity Grade VVS 2
Polish VERY GOOD
Symmetry VERY GOOD
Fluorescence VERY SLIGHT
Inscription(s) IGI LG799665941

Comments: This Laboratory Grown Diamond was created by Chemical Vapor Deposition (CVD) growth process. Indications of post-growth treatment.

LABORATORY GROWN DIAMOND REPORT

May 15, 2026

IGI Report Number

LG799665941

Description

LABORATORY GROWN DIAMOND

Shape and Cutting Style

SQUARE CUSHION MODIFIED BRILLIANT

Measurements

5.57 X 5.47 X 3.50 MM

GRADING RESULTS

Carat Weight

0.86 CARAT

Color Grade

FANCY BROWN

Clarity Grade

VVS 2

ADDITIONAL GRADING INFORMATION

Polish

VERY GOOD

Symmetry

VERY GOOD

Fluorescence

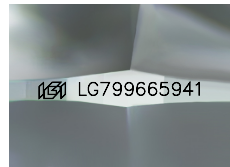
VERY SLIGHT

Inscription(s)

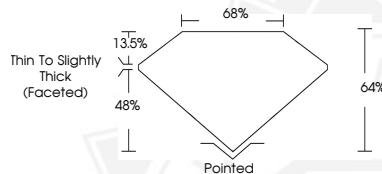
IGI LG799665941

Comments: This Laboratory Grown Diamond was created by Chemical Vapor Deposition (CVD) growth process.

Indications of post-growth treatment.



Sample Image Used



May 15, 2026

IGI Report Number LG799665941
**SQUARE CUSHION MODIFIED
BRILLIANT**

**LABORATORY GROWN DIAMOND
5.57 X 5.47 X 3.50 MM**

Carat Weight 0.86 CARAT
Color Grade FANCY BROWN
Clarity Grade VVS 2
Polish VERY GOOD
Symmetry VERY GOOD
Fluorescence VERY SLIGHT
Inscription(s) IGI LG799665941

Comments: This Laboratory Grown Diamond was created by Chemical Vapor Deposition (CVD) growth process. Indications of post-growth treatment.



THIS DOCUMENT WAS PRODUCED WITH THE FOLLOWING SECURITY MEASURES: SPECIAL DOCUMENT PAPER, INK SCREENS, WATERMARK, BACKGROUND DESIGNS, HOLOGRAM AND OTHER SECURITY FEATURES NOT LISTED AND DO EXCEED DOCUMENT SECURITY INDUSTRY GUIDELINES.