



LABORATORY GROWN DIAMOND REPORT

May 18, 2026
 IGI Report Number **LG799665890**
 Description **LABORATORY GROWN DIAMOND**
 Shape and Cutting Style **HALF MOON BRILLIANT**
 Measurements **6.42 X 4.22 X 2.69 MM**

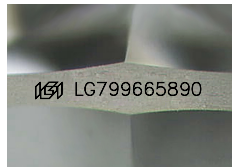
GRADING RESULTS

Carat Weight **0.52 CARAT**
 Color Grade **E**
 Clarity Grade **VVS 2**

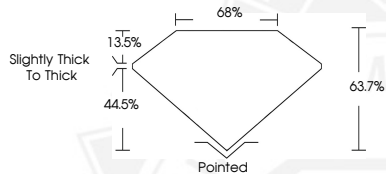
ADDITIONAL GRADING INFORMATION

Polish **VERY GOOD**
 Symmetry **VERY GOOD**
 Fluorescence **NONE**
 Inscription(s) **IGI LG799665890**

Comments: This Laboratory Grown Diamond was created by Chemical Vapor Deposition (CVD) growth process. Type IIa



Sample Image Used



May 18, 2026

IGI Report Number **LG799665890**
HALF MOON BRILLIANT
LABORATORY GROWN DIAMOND
6.42 X 4.22 X 2.69 MM
 Carat Weight **0.52 CARAT**
 Color Grade **E**
 Clarity Grade **VVS 2**
 Polish **VERY GOOD**
 Symmetry **VERY GOOD**
 Fluorescence **NONE**
 Inscription(s) **IGI LG799665890**

Comments: This Laboratory Grown Diamond was created by Chemical Vapor Deposition (CVD) growth process. Type IIa



May 18, 2026

IGI Report Number **LG799665890**
HALF MOON BRILLIANT
LABORATORY GROWN DIAMOND
6.42 X 4.22 X 2.69 MM
 Carat Weight **0.52 CARAT**
 Color Grade **E**
 Clarity Grade **VVS 2**
 Polish **VERY GOOD**
 Symmetry **VERY GOOD**
 Fluorescence **NONE**
 Inscription(s) **IGI LG799665890**

Comments: This Laboratory Grown Diamond was created by Chemical Vapor Deposition (CVD) growth process. Type IIa



THIS DOCUMENT WAS PRODUCED WITH THE FOLLOWING SECURITY MEASURES: SPECIAL DOCUMENT PAPER, INK SCREENS, WATERMARK, BACKGROUND DESIGNS, HOLOGRAM AND OTHER SECURITY FEATURES NOT LISTED AND DO EXCEED DOCUMENT SECURITY INDUSTRY GUIDELINES.