



**INTERNATIONAL  
GEMOLOGICAL  
INSTITUTE**

**ELECTRONIC COPY**



May 9, 2026

**IGI Report Number LG799665838**  
**CUT CORNERED RECTANGULAR  
MODIFIED BRILLIANT**  
**LABORATORY GROWN DIAMOND**  
**6.56 X 4.70 X 3.13 MM**

**Carat Weight 0.82 CARAT**  
**Color Grade E**  
**Clarity Grade VS 1**  
**Polish EXCELLENT**  
**Symmetry VERY GOOD**  
**Fluorescence NONE**  
**Inscription(s) IGI LG799665838**

Comments: This Laboratory Grown Diamond was created by Chemical Vapor Deposition (CVD) growth process. Type IIa

**LABORATORY GROWN DIAMOND REPORT**

May 9, 2026  
IGI Report Number **LG799665838**  
Description **LABORATORY GROWN DIAMOND**  
Shape and Cutting Style **CUT CORNERED RECTANGULAR MODIFIED  
BRILLIANT**  
Measurements **6.56 X 4.70 X 3.13 MM**

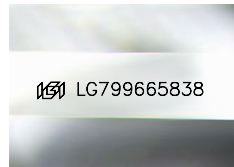
**GRADING RESULTS**

Carat Weight **0.82 CARAT**  
Color Grade **E**  
Clarity Grade **VS 1**

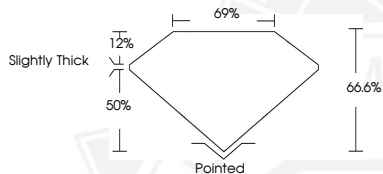
**ADDITIONAL GRADING INFORMATION**

Polish **EXCELLENT**  
Symmetry **VERY GOOD**  
Fluorescence **NONE**  
Inscription(s) **IGI LG799665838**

Comments: This Laboratory Grown Diamond was created by Chemical Vapor Deposition (CVD) growth process. Type IIa



Sample Image Used



May 9, 2026

**IGI Report Number LG799665838**  
**CUT CORNERED RECTANGULAR  
MODIFIED BRILLIANT**  
**LABORATORY GROWN DIAMOND**  
**6.56 X 4.70 X 3.13 MM**

**Carat Weight 0.82 CARAT**  
**Color Grade E**  
**Clarity Grade VS 1**  
**Polish EXCELLENT**  
**Symmetry VERY GOOD**  
**Fluorescence NONE**  
**Inscription(s) IGI LG799665838**

Comments: This Laboratory Grown Diamond was created by Chemical Vapor Deposition (CVD) growth process. Type IIa



THIS DOCUMENT WAS PRODUCED WITH THE FOLLOWING SECURITY MEASURES: SPECIAL DOCUMENT PAPER, INK SCREENS, WATERMARK, BACKGROUND DESIGNS, HOLOGRAM AND OTHER SECURITY FEATURES NOT LISTED AND DO EXCEED DOCUMENT SECURITY INDUSTRY GUIDELINES.

For terms & conditions and to verify this report, please visit [www.igi.org](http://www.igi.org)