



ELECTRONIC COPY

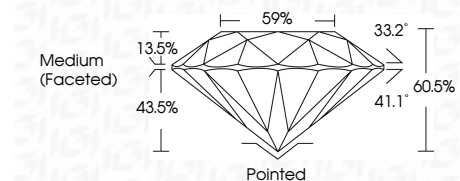
LG799658864 Report verification at igi.org



May 14, 2026 IGI Report Number LG799658864 Description LABORATORY GROWN DIAMOND Shape and Cutting Style ROUND BRILLIANT Measurements 9.38 - 9.42 X 5.69 MM

GRADING RESULTS

Carat Weight 3.07 CARATS Color Grade D Clarity Grade VVS 1 Cut Grade IDEAL



ADDITIONAL GRADING INFORMATION

Polish EXCELLENT Symmetry EXCELLENT Fluorescence NONE Inscription(s) LG799658864 Comments: HEARTS & ARROWS This Laboratory Grown Diamond was created by Chemical Vapor Deposition (CVD) growth process. Type IIa



Summary table of diamond characteristics: May 14, 2026, IGI Report No LG799658864, ROUND BRILLIANT, 9.38 - 9.42 X 5.69 MM, 3.07 CARATS, D, VVS 1, IDEAL, 60.5%, 59%, Medium (Faceted), Pointed, EXCELLENT, EXCELLENT, NONE, LG799658864

May 14, 2026 IGI Report Number LG799658864 Description LABORATORY GROWN DIAMOND Shape and Cutting Style ROUND BRILLIANT Measurements 9.38 - 9.42 X 5.69 MM

GRADING RESULTS

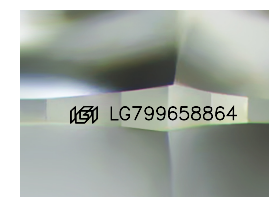
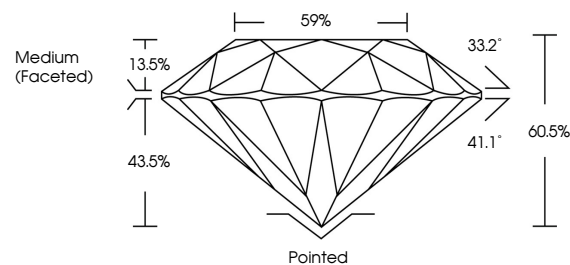
Carat Weight 3.07 CARATS Color Grade D Clarity Grade VVS 1 Cut Grade IDEAL

ADDITIONAL GRADING INFORMATION

Polish EXCELLENT Symmetry EXCELLENT Fluorescence NONE Inscription(s) LG799658864

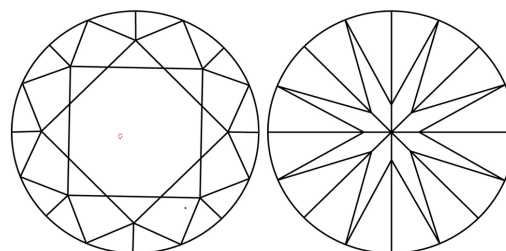
Comments: HEARTS & ARROWS This Laboratory Grown Diamond was created by Chemical Vapor Deposition (CVD) growth process. Type IIa

PROPORTIONS



Sample Image Used

CLARITY CHARACTERISTICS



KEY TO SYMBOLS

Red symbols indicate internal characteristics. Green symbols indicate external characteristics.



COLOR

D E F G H I J Faint Very Light Light

CLARITY

FL IF VVS 1-2 VS 1-2 SI 1-2 I 1-3 Flawless Internally Flawless Very Very Slightly Included Very Slightly Included Slightly Included Included

