



ELECTRONIC COPY

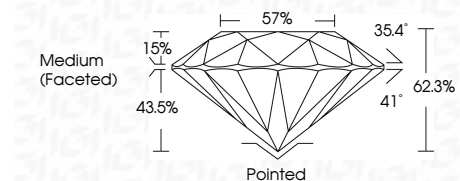
LG799658838 Report verification at igi.org



May 14, 2026 IGI Report Number LG799658838 Description LABORATORY GROWN DIAMOND Shape and Cutting Style ROUND BRILLIANT Measurements 9.24 - 9.27 X 5.77 MM

GRADING RESULTS

Carat Weight 3.05 CARATS Color Grade E Clarity Grade VVS 1 Cut Grade IDEAL



ADDITIONAL GRADING INFORMATION

Polish EXCELLENT Symmetry EXCELLENT Fluorescence NONE Inscription(s) LG799658838 Comments: HEARTS & ARROWS This Laboratory Grown Diamond was created by Chemical Vapor Deposition (CVD) growth process. Type IIa



May 14, 2026 IGI Report No LG799658838 ROUND BRILLIANT 9.24 - 9.27 X 5.77 MM 3.05 CARATS E VVS 1 IDEAL 62.3% 57% Medium (Faceted) Pointed EXCELLENT EXCELLENT NONE NONE LG799658838

LABORATORY GROWN DIAMOND REPORT

May 14, 2026 IGI Report Number LG799658838 Description LABORATORY GROWN DIAMOND Shape and Cutting Style ROUND BRILLIANT Measurements 9.24 - 9.27 X 5.77 MM

GRADING RESULTS

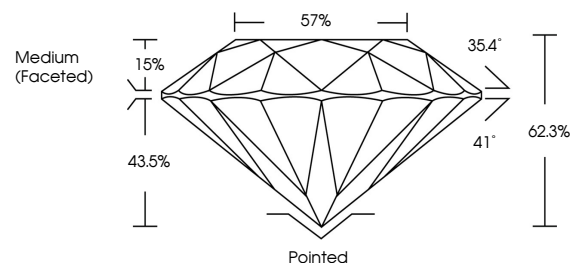
Carat Weight 3.05 CARATS Color Grade E Clarity Grade VVS 1 Cut Grade IDEAL

ADDITIONAL GRADING INFORMATION

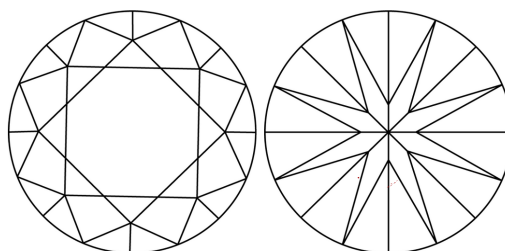
Polish EXCELLENT Symmetry EXCELLENT Fluorescence NONE Inscription(s) LG799658838

Comments: HEARTS & ARROWS This Laboratory Grown Diamond was created by Chemical Vapor Deposition (CVD) growth process. Type IIa

PROPORTIONS

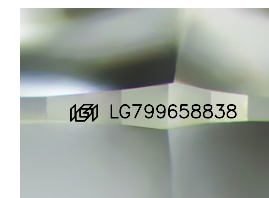
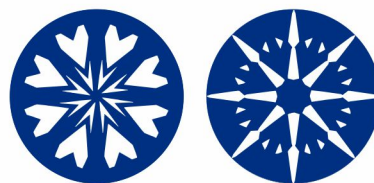


CLARITY CHARACTERISTICS



KEY TO SYMBOLS

Red symbols indicate internal characteristics. Green symbols indicate external characteristics.



Sample Image Used

COLOR

D E F G H I J Faint Very Light Light

CLARITY

FL IF VVS 1-2 VS 1-2 SI 1-2 I 1-3 Flawless Internally Flawless Very Very Slightly Included Very Slightly Included Slightly Included Included

