



ELECTRONIC COPY

LG799657338
Report verification at igi.org



May 8, 2026
IGI Report Number **LG799657338**
Description **LABORATORY GROWN DIAMOND**
Shape and Cutting Style **CUSHION MODIFIED BRILLIANT**
Measurements **9.57 X 7.04 X 4.82 MM**
GRADING RESULTS
Carat Weight **3.03 CARATS**
Color Grade **FANCY VIVID GREEN**
Clarity Grade **VVS 2**

May 8, 2026
IGI Report Number **LG799657338**
Description **LABORATORY GROWN DIAMOND**
Shape and Cutting Style **CUSHION MODIFIED BRILLIANT**
Measurements **9.57 X 7.04 X 4.82 MM**

GRADING RESULTS

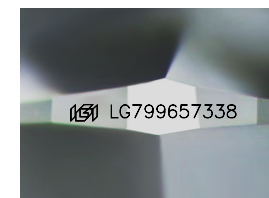
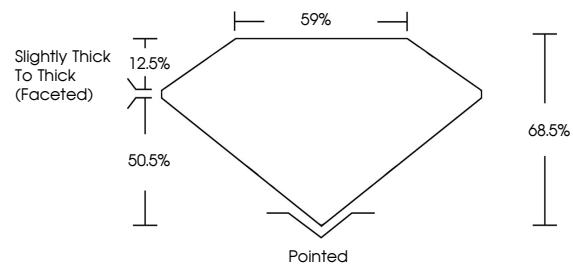
Carat Weight **3.03 CARATS**
Color Grade **FANCY VIVID GREEN**
Clarity Grade **VVS 2**

ADDITIONAL GRADING INFORMATION

Polish **EXCELLENT**
Symmetry **EXCELLENT**
Fluorescence **NONE**
Inscription(s) **IGI LG799657338**

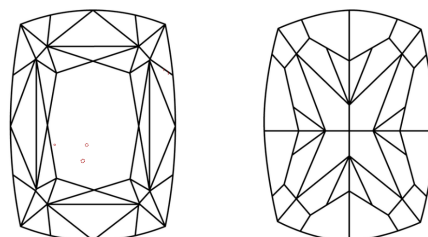
Comments: This Laboratory Grown Diamond was created by Chemical Vapor Deposition (CVD) growth process.
Indications of post-growth treatment.

PROPORTIONS



Sample Image Used

CLARITY CHARACTERISTICS



KEY TO SYMBOLS

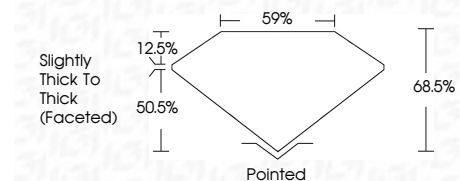
Red symbols indicate internal characteristics.
Green symbols indicate external characteristics.

COLOR

D E F G H I J Faint Very Light Light

CLARITY

FL	IF	VVS ¹⁻²	VS ¹⁻²	SI ¹⁻²	I ¹⁻³
Flawless	Internally Flawless	Very Very Slightly Included	Very Slightly Included	Slightly Included	Included



ADDITIONAL GRADING INFORMATION

Polish **EXCELLENT**
Symmetry **EXCELLENT**
Fluorescence **NONE**
Inscription(s) **IGI LG799657338**
Comments: This Laboratory Grown Diamond was created by Chemical Vapor Deposition (CVD) growth process.
Indications of post-growth treatment.



May 8, 2026
IGI Report No **LG799657338**
CUSHION MODIFIED BRILLIANT
3.03 CARATS
Carat Weight **FANCY VIVID GREEN**
Color Grade **VVS 2**
Depth **68.5%**
Table **59%**
Girdle **Slightly Thick To Thick (Faceted)**
Culet **Pointed**
Polish **EXCELLENT**
Symmetry **EXCELLENT**
Fluorescence **NONE**
Inscription(s) **IGI LG799657338**
Comments: This Laboratory Grown Diamond was created by Chemical Vapor Deposition (CVD) growth process.
Indications of post-growth treatment.