



**ELECTRONIC COPY**

LG799657282  
Report verification at igi.org



May 7, 2026

IGI Report Number **LG799657282**

Description **LABORATORY GROWN DIAMOND**

Shape and Cutting Style **KITE MODIFIED BRILLIANT**

Measurements **15.36 X 6.80 X 4.29 MM**

**GRADING RESULTS**

Carat Weight **2.19 CARATS**

Color Grade **E**

Clarity Grade **VVS 2**

May 7, 2026  
IGI Report Number **LG799657282**  
Description **LABORATORY GROWN DIAMOND**  
Shape and Cutting Style **KITE MODIFIED BRILLIANT**  
Measurements **15.36 X 6.80 X 4.29 MM**

**GRADING RESULTS**

Carat Weight **2.19 CARATS**

Color Grade **E**

Clarity Grade **VVS 2**

**ADDITIONAL GRADING INFORMATION**

Polish **EXCELLENT**

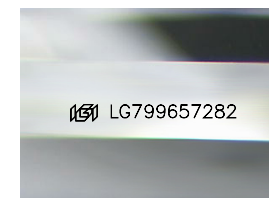
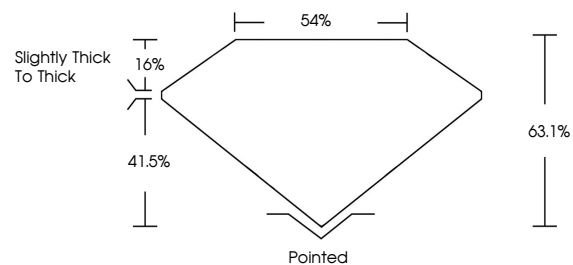
Symmetry **EXCELLENT**

Fluorescence **NONE**

Inscription(s) **IGI LG799657282**

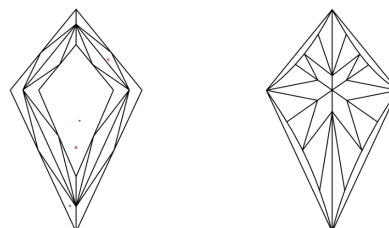
Comments: This Laboratory Grown Diamond was created by Chemical Vapor Deposition (CVD) growth process.  
Type IIa

**PROPORTIONS**



Sample Image Used

**CLARITY CHARACTERISTICS**



**KEY TO SYMBOLS**

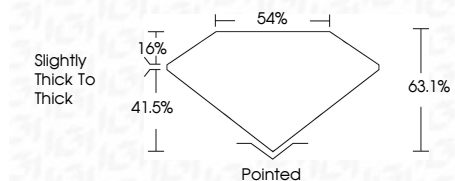
Red symbols indicate internal characteristics.  
Green symbols indicate external characteristics.

**COLOR**

D E F G H I J Faint Very Light Light

**CLARITY**

FL	IF	VVS <sup>1-2</sup>	VS <sup>1-2</sup>	SI <sup>1-2</sup>	I <sup>1-3</sup>
Flawless	Internally Flawless	Very Very Slightly Included	Very Slightly Included	Slightly Included	Included



**ADDITIONAL GRADING INFORMATION**

Polish **EXCELLENT**

Symmetry **EXCELLENT**

Fluorescence **NONE**

Inscription(s) **IGI LG799657282**

Comments: This Laboratory Grown Diamond was created by Chemical Vapor Deposition (CVD) growth process.  
Type IIa



**IGI**



May 7, 2026  
IGI Report No **LG799657282**  
**KITE MODIFIED BRILLIANT**  
15.36 X 6.80 X 4.29 MM  
Carat Weight **2.19 CARATS**  
Color Grade **E**  
Clarity Grade **VVS 2**  
Depth **41.5%**  
Table **16%**  
Girdle **Slightly Thick To Thick**  
Culet **Pointed**  
Polish **EXCELLENT**  
Symmetry **EXCELLENT**  
Fluorescence **NONE**  
Inscription(s) **IGI LG799657282**

Comments: This Laboratory Grown Diamond was created by Chemical Vapor Deposition (CVD) growth process.  
Type IIa