



ELECTRONIC COPY

LG799656579 Report verification at igi.org

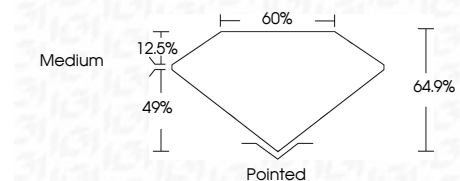


May 8, 2026 IGI Report Number LG799656579 Description LABORATORY GROWN DIAMOND Shape and Cutting Style CUT CORNERED RECTANGULAR MODIFIED BRILLIANT

Measurements 10.28 X 7.27 X 4.72 MM

GRADING RESULTS

Carat Weight 3.00 CARATS Color Grade E Clarity Grade VS 1



ADDITIONAL GRADING INFORMATION

Polish EXCELLENT Symmetry EXCELLENT Fluorescence NONE Inscription(s) LG799656579 Comments: This Laboratory Grown Diamond was created by Chemical Vapor Deposition (CVD) growth process. Type IIa



May 8, 2026 IGI Report No LG799656579 CUT CORNERED RECT. MODIFIED BRILLIANT 10.28 X 7.27 X 4.72 MM 3.00 CARATS E VS 1 64.9% 60% Medium Pointed EXCELLENT EXCELLENT NONE LG799656579 Comments: This Laboratory Grown Diamond was created by Chemical Vapor Deposition (CVD) growth process. Type IIa

LABORATORY GROWN DIAMOND REPORT

May 8, 2026 IGI Report Number LG799656579 Description LABORATORY GROWN DIAMOND Shape and Cutting Style CUT CORNERED RECTANGULAR MODIFIED BRILLIANT Measurements 10.28 X 7.27 X 4.72 MM

GRADING RESULTS

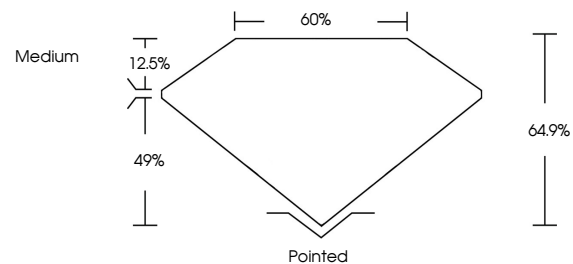
Carat Weight 3.00 CARATS Color Grade E Clarity Grade VS 1

ADDITIONAL GRADING INFORMATION

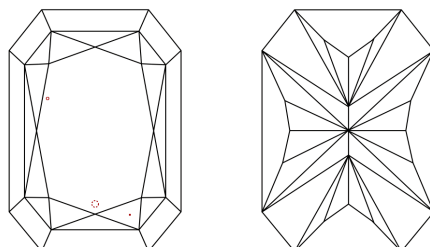
Polish EXCELLENT Symmetry EXCELLENT Fluorescence NONE Inscription(s) LG799656579

Comments: This Laboratory Grown Diamond was created by Chemical Vapor Deposition (CVD) growth process. Type IIa

PROPORTIONS

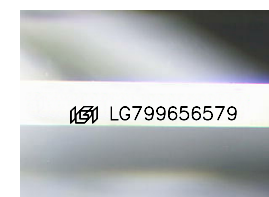


CLARITY CHARACTERISTICS



KEY TO SYMBOLS

Red symbols indicate internal characteristics. Green symbols indicate external characteristics.



Sample Image Used

COLOR

D E F G H I J Faint Very Light Light

CLARITY

FL IF VS 1-2 VS 1-2 SI 1-2 I 1-3 Flawless Internally Flawless Very Very Slightly Included Very Slightly Included Slightly Included Included