



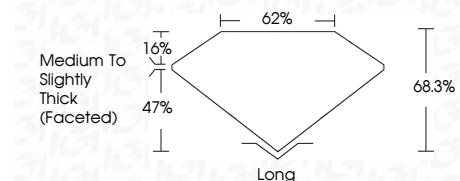
ELECTRONIC COPY

LG799655334
Report verification at igi.org



May 14, 2026
IGI Report Number **LG799655334**
Description **LABORATORY GROWN DIAMOND**
Shape and Cutting Style **MODIFIED RECTANGULAR
CUSHION MIXED CUT**
Measurements **9.55 X 5.71 X 3.90 MM**

GRADING RESULTS
Carat Weight **2.01 CARATS**
Color Grade **D**
Clarity Grade **VVS 2**



ADDITIONAL GRADING INFORMATION
Polish **EXCELLENT**
Symmetry **EXCELLENT**
Fluorescence **NONE**
Inscription(s) **IGI LG799655334**
Comments: This Laboratory Grown Diamond was created by Chemical Vapor Deposition (CVD) growth process. Type IIa



May 14, 2026
IGI Report No **LG799655334**
MODIFIED RECTANGULAR CUSHION MIXED CUT
9.55 X 5.71 X 3.90 MM
2.01 CARATS
D
VVS 2
68.3%
47%
1.6%
Medium to Slightly Thick (Faceted)
Long
EXCELLENT
EXCELLENT
NONE
IGI LG799655334
Comments: This Laboratory Grown Diamond was created by Chemical Vapor Deposition (CVD) growth process. Type IIa

LABORATORY GROWN DIAMOND REPORT

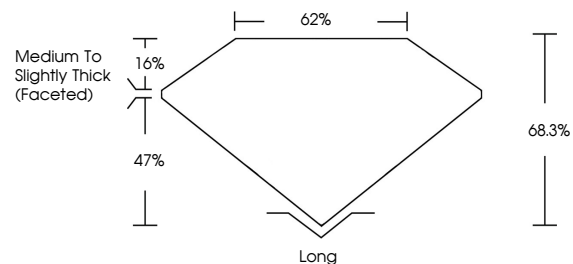
May 14, 2026
IGI Report Number **LG799655334**
Description **LABORATORY GROWN DIAMOND**
Shape and Cutting Style **MODIFIED RECTANGULAR
CUSHION MIXED CUT**
Measurements **9.55 X 5.71 X 3.90 MM**

GRADING RESULTS
Carat Weight **2.01 CARATS**
Color Grade **D**
Clarity Grade **VVS 2**

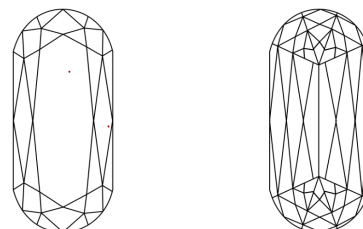
ADDITIONAL GRADING INFORMATION
Polish **EXCELLENT**
Symmetry **EXCELLENT**
Fluorescence **NONE**
Inscription(s) **IGI LG799655334**

Comments: This Laboratory Grown Diamond was created by Chemical Vapor Deposition (CVD) growth process. Type IIa

PROPORTIONS

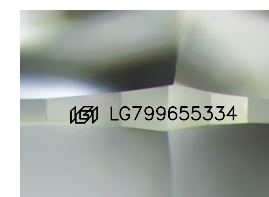


CLARITY CHARACTERISTICS



KEY TO SYMBOLS

Red symbols indicate internal characteristics.
Green symbols indicate external characteristics.



Sample Image Used

COLOR

D E F G H I J Faint Very Light Light

CLARITY

FL	IF	VVS ¹⁻²	VS ¹⁻²	SI ¹⁻²	I ¹⁻³
Flawless	Internally Flawless	Very Very Slightly Included	Very Slightly Included	Slightly Included	Included

