



**ELECTRONIC COPY**

LG799655220  
Report verification at igi.org



May 14, 2026  
IGI Report Number **LG799655220**  
Description **LABORATORY GROWN DIAMOND**  
Shape and Cutting Style **HEXAGONAL MODIFIED  
BRILLIANT**  
Measurements **14.56 X 7.31 X 4.96 MM**  
**GRADING RESULTS**  
Carat Weight **3.66 CARATS**  
Color Grade **D**  
Clarity Grade **VS 1**

**LABORATORY GROWN DIAMOND REPORT**

May 14, 2026  
IGI Report Number **LG799655220**  
Description **LABORATORY GROWN DIAMOND**  
Shape and Cutting Style **HEXAGONAL MODIFIED  
BRILLIANT**  
Measurements **14.56 X 7.31 X 4.96 MM**

**GRADING RESULTS**

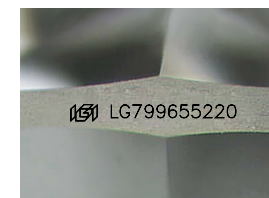
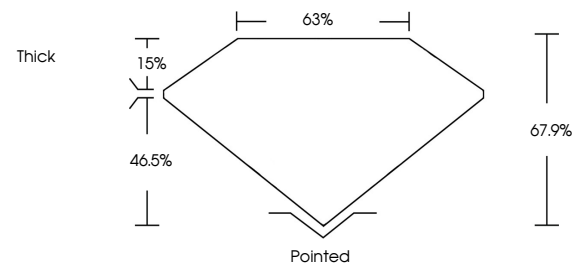
Carat Weight **3.66 CARATS**  
Color Grade **D**  
Clarity Grade **VS 1**

**ADDITIONAL GRADING INFORMATION**

Polish **EXCELLENT**  
Symmetry **EXCELLENT**  
Fluorescence **NONE**  
Inscription(s) **IGI LG799655220**

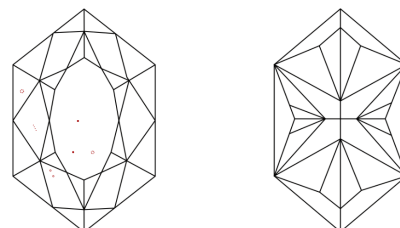
Comments: This Laboratory Grown Diamond was created by Chemical Vapor Deposition (CVD) growth process.  
Type IIa

**PROPORTIONS**



Sample Image Used

**CLARITY CHARACTERISTICS**



**KEY TO SYMBOLS**

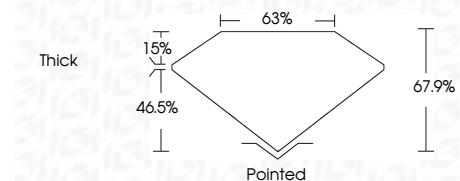
Red symbols indicate internal characteristics.  
Green symbols indicate external characteristics.

**COLOR**

D E F G H I J Faint Very Light Light

**CLARITY**

FL	IF	VS <sup>1-2</sup>	VS <sup>1-2</sup>	SI <sup>1-2</sup>	I <sup>1-3</sup>
Flawless	Internally Flawless	Very Very Slightly Included	Very Slightly Included	Slightly Included	Included



**ADDITIONAL GRADING INFORMATION**

Polish **EXCELLENT**  
Symmetry **EXCELLENT**  
Fluorescence **NONE**  
Inscription(s) **IGI LG799655220**  
Comments: This Laboratory Grown Diamond was created by Chemical Vapor Deposition (CVD) growth process.  
Type IIa



**IGI**



May 14, 2026  
IGI Report No LG799655220  
**HEXAGONAL MODIFIED BRILLIANT**  
14.56 X 7.31 X 4.96 MM  
3.66 CARATS  
D  
VS 1  
67.9%  
63%  
Thick  
Pointed  
EXCELLENT  
EXCELLENT  
NONE  
IGI LG799655220

Comments: This Laboratory Grown Diamond was created by Chemical Vapor Deposition (CVD) growth process.  
Type IIa