



ELECTRONIC COPY

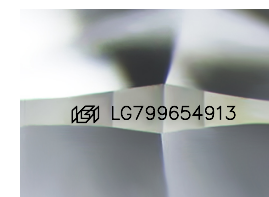
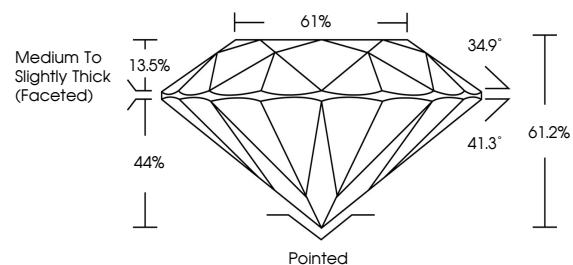
LG799654913
Report verification at igi.org



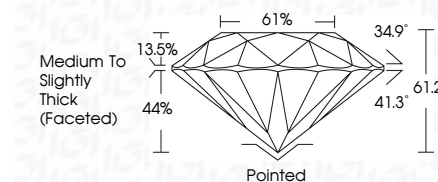
May 19, 2026
IGI Report Number LG799654913
Description LABORATORY GROWN DIAMOND
Shape and Cutting Style ROUND BRILLIANT
Measurements 8.04 - 8.13 X 4.95 MM
GRADING RESULTS
Carat Weight 2.01 CARATS
Color Grade D
Clarity Grade INTERNALLY FLAWLESS
Cut Grade EXCELLENT

May 19, 2026
IGI Report Number LG799654913
Description LABORATORY GROWN DIAMOND
Shape and Cutting Style ROUND BRILLIANT
Measurements 8.04 - 8.13 X 4.95 MM
GRADING RESULTS
Carat Weight 2.01 CARATS
Color Grade D
Clarity Grade INTERNALLY FLAWLESS
Cut Grade EXCELLENT

PROPORTIONS



Sample Image Used



ADDITIONAL GRADING INFORMATION

Polish EXCELLENT
Symmetry EXCELLENT
Fluorescence NONE
Inscription(s) IGI LG799654913

Comments: As Grown - No indication of post-growth treatment. This Laboratory Grown Diamond was created by High Pressure High Temperature (HPHT) growth process. Type II

COLOR

D E F G H I J Faint Very Light Light

CLARITY

FL IF VS 1-2 VS 1-2 SI 1-2 I 1-3
Flawless Internally Flawless Very Very Slightly Very Slightly Slightly Included Included

ADDITIONAL GRADING INFORMATION

Polish EXCELLENT
Symmetry EXCELLENT
Fluorescence NONE
Inscription(s) IGI LG799654913
Comments: As Grown - No indication of post-growth treatment. This Laboratory Grown Diamond was created by High Pressure High Temperature (HPHT) growth process. Type II



IGI

May 19, 2026
IGI Report No LG799654913
ROUND BRILLIANT
8.04 - 8.13 X 4.95 MM
2.01 CARATS
Color Grade D
Clarity Grade IF
Cut Grade EXCELLENT
Depth 61.2%
Table 61%
Girdle Medium To Slightly Thick (Faceted)
Culet Pointed
Polish EXCELLENT
Symmetry EXCELLENT
Fluorescence NONE
Inscriptions(s) IGI LG799654913
Comments: As Grown - No indication of post-growth treatment. This Laboratory Grown Diamond was created by High Pressure High Temperature (HPHT) growth process. Type II