



**ELECTRONIC COPY**

LG799653449  
Report verification at igi.org



May 19, 2026  
IGI Report Number **LG799653449**  
Description **LABORATORY GROWN DIAMOND**  
Shape and Cutting Style **ROUND MIXED CUT**  
Measurements **7.27 - 7.27 X 4.22 MM**  
**GRADING RESULTS**  
Carat Weight **1.55 CARAT**  
Color Grade **FANCY VIVID BLUE**  
Clarity Grade **VVS 2**

**LABORATORY GROWN DIAMOND REPORT**

May 19, 2026  
IGI Report Number **LG799653449**  
Description **LABORATORY GROWN DIAMOND**  
Shape and Cutting Style **ROUND MIXED CUT**  
Measurements **7.27 - 7.27 X 4.22 MM**

**GRADING RESULTS**

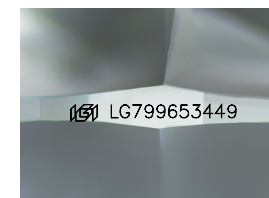
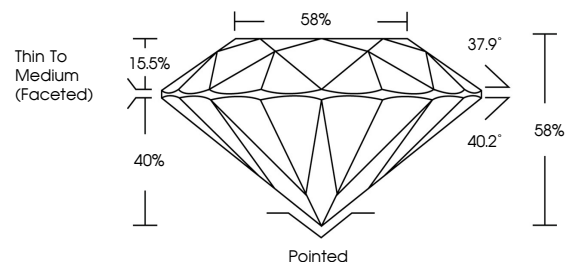
Carat Weight **1.55 CARAT**  
Color Grade **FANCY VIVID BLUE**  
Clarity Grade **VVS 2**

**ADDITIONAL GRADING INFORMATION**

Polish **EXCELLENT**  
Symmetry **EXCELLENT**  
Fluorescence **NONE**  
Inscription(s) **IGI LG799653449**

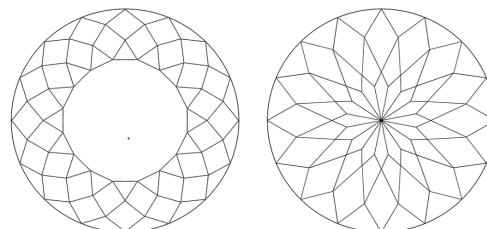
Comments: This Laboratory Grown Diamond was created by Chemical Vapor Deposition (CVD) growth process.  
Indications of post-growth treatment.

**PROPORTIONS**



Sample Image Used

**CLARITY CHARACTERISTICS**



**KEY TO SYMBOLS**

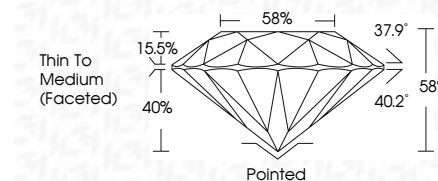
Red symbols indicate internal characteristics.  
Green symbols indicate external characteristics.

**COLOR**

D E F G H I J Faint Very Light Light

**CLARITY**

FL	IF	VVS <sup>1-2</sup>	VS <sup>1-2</sup>	SI <sup>1-2</sup>	I <sup>1-3</sup>
Flawless	Internally Flawless	Very Very Slightly Included	Very Slightly Included	Slightly Included	Included



**ADDITIONAL GRADING INFORMATION**

Polish **EXCELLENT**  
Symmetry **EXCELLENT**  
Fluorescence **NONE**  
Inscription(s) **IGI LG799653449**  
Comments: This Laboratory Grown Diamond was created by Chemical Vapor Deposition (CVD) growth process.  
Indications of post-growth treatment.



May 19, 2026  
IGI Report No LG799653449  
**ROUND MIXED CUT**  
1.55 CARAT  
FANCY VIVID BLUE  
VVS 2  
7.27 - 7.27 X 4.22 MM  
Color Grade  
Clarity Grade  
Depth  
Table  
Girdle  
Thin To Medium (Faceted)  
Pointed  
EXCELLENT  
EXCELLENT  
NONE  
IGI LG799653449  
Comments: This Laboratory Grown Diamond was created by Chemical Vapor Deposition (CVD) growth process.  
Indications of post-growth treatment.