



ELECTRONIC COPY

LG799652352
Report verification at igi.org



May 27, 2026
IGI Report Number LG799652352
Description LABORATORY GROWN DIAMOND
Shape and Cutting Style CUT CORNERED RECTANGULAR MODIFIED BRILLIANT
Measurements 7.99 X 5.42 X 3.77 MM
GRADING RESULTS
Carat Weight 1.51 CARAT
Color Grade FANCY VIVID BLUE
Clarity Grade VVS 2

LABORATORY GROWN DIAMOND REPORT

May 27, 2026
IGI Report Number LG799652352
Description LABORATORY GROWN DIAMOND
Shape and Cutting Style CUT CORNERED RECTANGULAR MODIFIED BRILLIANT
Measurements 7.99 X 5.42 X 3.77 MM

GRADING RESULTS

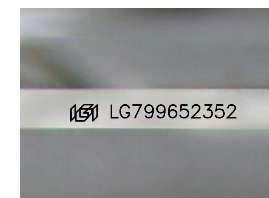
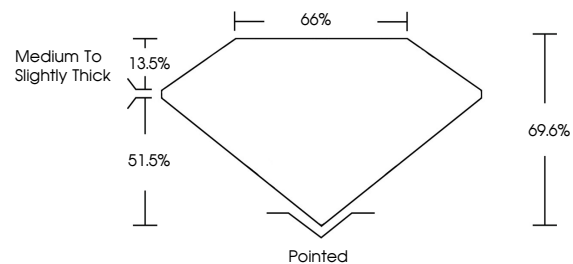
Carat Weight 1.51 CARAT
Color Grade FANCY VIVID BLUE
Clarity Grade VVS 2

ADDITIONAL GRADING INFORMATION

Polish EXCELLENT
Symmetry EXCELLENT
Fluorescence NONE
Inscription(s) IGI LG799652352

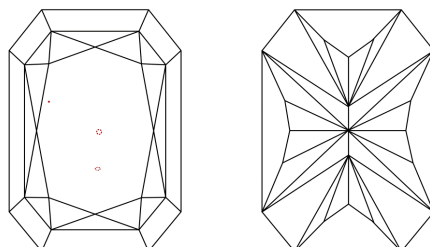
Comments: This Laboratory Grown Diamond was created by Chemical Vapor Deposition (CVD) growth process.
Indications of post-growth treatment.

PROPORTIONS



Sample Image Used

CLARITY CHARACTERISTICS



KEY TO SYMBOLS

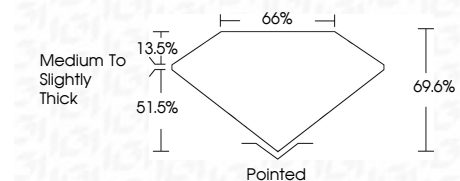
Red symbols indicate internal characteristics.
Green symbols indicate external characteristics.

COLOR

D E F G H I J Faint Very Light Light

CLARITY

FL IF VVS 1-2 VS 1-2 SI 1-2 I 1-3
Flawless Internally Flawless Very Very Slightly Included Very Slightly Included Slightly Included Included



ADDITIONAL GRADING INFORMATION

Polish EXCELLENT
Symmetry EXCELLENT
Fluorescence NONE
Inscription(s) IGI LG799652352
Comments: This Laboratory Grown Diamond was created by Chemical Vapor Deposition (CVD) growth process.
Indications of post-growth treatment.



May 27, 2026
IGI Report No LG799652352
CUT CORNERED RECT. MODIFIED BRILLIANT
1.51 CARAT
FANCY VIVID BLUE
VVS 2
69.6%
66%
Medium to Slightly Thick
Pointed
EXCELLENT
EXCELLENT
NONE
IGI LG799652352
Comments: This Laboratory Grown Diamond was created by Chemical Vapor Deposition (CVD) growth process.
Indications of post-growth treatment.