



ELECTRONIC COPY

LG799651941 Report verification at igi.org



May 21, 2026 IGI Report Number LG799651941 Description LABORATORY GROWN DIAMOND Shape and Cutting Style CUSHION MODIFIED BRILLIANT Measurements 10.18 X 8.97 X 6.10 MM GRADING RESULTS Carat Weight 5.10 CARATS Color Grade FANCY LIGHT BROWN Clarity Grade VVS 2

LABORATORY GROWN DIAMOND REPORT

May 21, 2026 IGI Report Number LG799651941 Description LABORATORY GROWN DIAMOND Shape and Cutting Style CUSHION MODIFIED BRILLIANT Measurements 10.18 X 8.97 X 6.10 MM

GRADING RESULTS

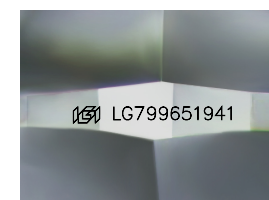
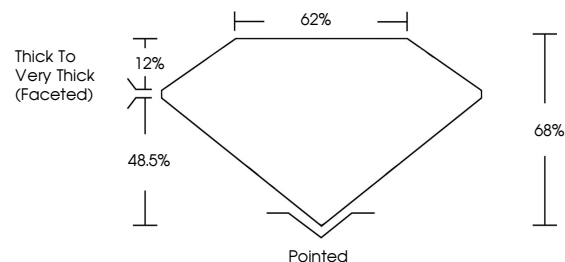
Carat Weight 5.10 CARATS Color Grade FANCY LIGHT BROWN Clarity Grade VVS 2

ADDITIONAL GRADING INFORMATION

Polish EXCELLENT Symmetry EXCELLENT Fluorescence VERY SLIGHT Inscription(s) IGI LG799651941

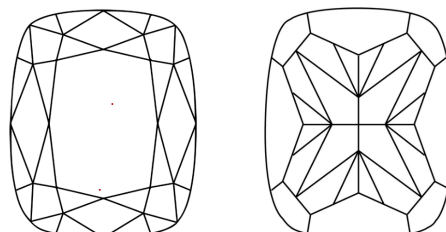
Comments: This Laboratory Grown Diamond was created by Chemical Vapor Deposition (CVD) growth process. Indications of post-growth treatment.

PROPORTIONS



Sample Image Used

CLARITY CHARACTERISTICS



KEY TO SYMBOLS

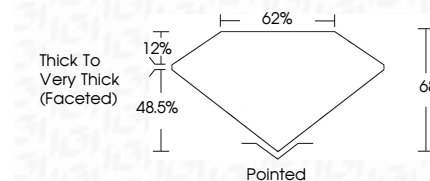
Red symbols indicate internal characteristics. Green symbols indicate external characteristics.

COLOR

D E F G H I J Faint Very Light Light

CLARITY

FL IF VVS 1-2 VS 1-2 SI 1-2 I 1-3 Flawless Internally Flawless Very Very Slightly Included Very Slightly Included Slightly Included Included



ADDITIONAL GRADING INFORMATION

Polish EXCELLENT Symmetry EXCELLENT Fluorescence VERY SLIGHT Inscription(s) IGI LG799651941 Comments: This Laboratory Grown Diamond was created by Chemical Vapor Deposition (CVD) growth process. Indications of post-growth treatment.



May 21, 2026 IGI Report No LG799651941 CUSHION MODIFIED BRILLIANT 10.18 X 8.97 X 6.10 MM 5.10 CARATS FANCY LIGHT BROWN VVS 2 68% 62% Thick to Very Thick (Faceted) Pointed EXCELLENT EXCELLENT VERY SLIGHT IGI LG799651941 Comments: This Laboratory Grown Diamond was created by Chemical Vapor Deposition (CVD) growth process. Indications of post-growth treatment.