



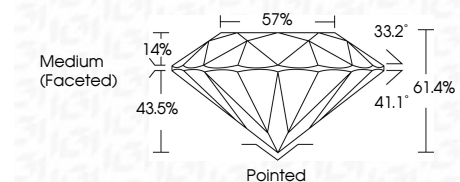
ELECTRONIC COPY

LG799651743
Report verification at igi.org



May 20, 2026
IGI Report Number **LG799651743**
Description **LABORATORY GROWN DIAMOND**
Shape and Cutting Style **ROUND BRILLIANT**
Measurements **9.19 - 9.23 X 5.65 MM**

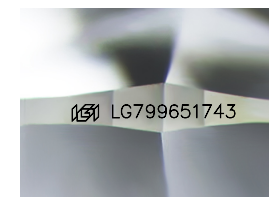
GRADING RESULTS
Carat Weight **2.93 CARATS**
Color Grade **D**
Clarity Grade **FLAWLESS**
Cut Grade **IDEAL**



ADDITIONAL GRADING INFORMATION
Polish **EXCELLENT**
Symmetry **EXCELLENT**
Fluorescence **NONE**
Inscription(s) **IGI LG799651743**
Comments: As Grown - No indication of post-growth treatment.
This Laboratory Grown Diamond was created by High Pressure High Temperature (HPHT) growth process.
Type II

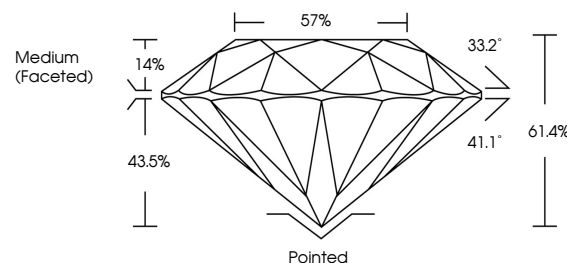


May 20, 2026
IGI Report No LG799651743
ROUND BRILLIANT
9.19 - 9.23 X 5.65 MM
2.93 CARATS
Color Grade **D**
Clarity Grade **FLAWLESS**
Cut Grade **IDEAL**
Depth **61.4%**
Table **57%**
Girdle **Medium (Faceted)**
Culet **Pointed**
Polish **EXCELLENT**
Symmetry **EXCELLENT**
Fluorescence **NONE**
Inscriptions(s) **IGI LG799651743**
Comments: As Grown - No indication of post-growth treatment.
This Laboratory Grown Diamond was created by High Pressure High Temperature (HPHT) growth process.
Type II

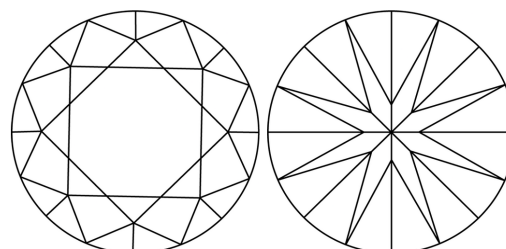


Sample Image Used

PROPORTIONS



CLARITY CHARACTERISTICS



KEY TO SYMBOLS

Red symbols indicate internal characteristics.
Green symbols indicate external characteristics.

COLOR

D E F G H I J Faint Very Light Light

CLARITY

FL	IF	VS ¹⁻²	VS ¹⁻²	SI ¹⁻²	I ¹⁻³
Flawless	Internally Flawless	Very Very Slightly Included	Very Slightly Included	Slightly Included	Included

