



**ELECTRONIC COPY**

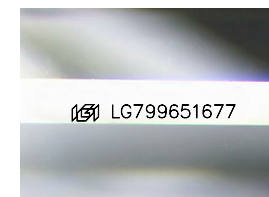
LG799651677  
Report verification at igi.org



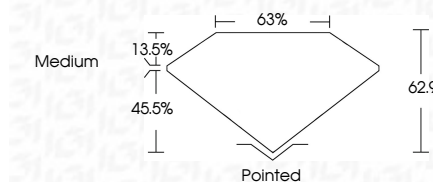
May 20, 2026  
IGI Report Number **LG799651677**  
Description **LABORATORY GROWN DIAMOND**  
Shape and Cutting Style **SQUARE EMERALD CUT**  
Measurements **6.49 X 6.47 X 4.07 MM**

**GRADING RESULTS**

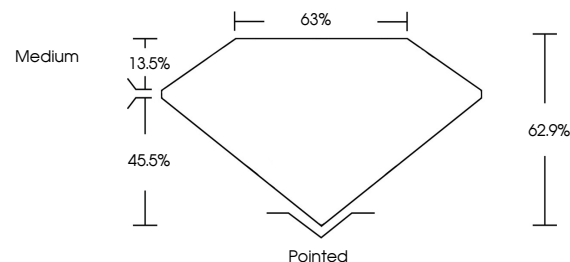
Carat Weight **1.55 CARAT**  
Color Grade **E**  
Clarity Grade **VVS 1**



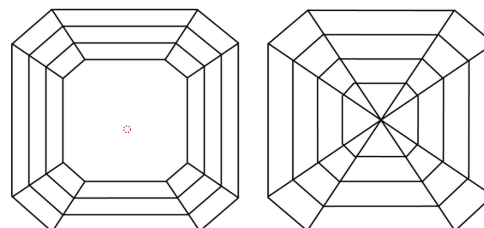
Sample Image Used



**PROPORTIONS**



**CLARITY CHARACTERISTICS**



**KEY TO SYMBOLS**

Red symbols indicate internal characteristics.  
Green symbols indicate external characteristics.

**COLOR**

D E F G H I J Faint Very Light Light

**CLARITY**

FL	IF	VVS <sup>1-2</sup>	VS <sup>1-2</sup>	SI <sup>1-2</sup>	I <sup>1-3</sup>
Flawless	Internally Flawless	Very Very Slightly Included	Very Slightly Included	Slightly Included	Included

**ADDITIONAL GRADING INFORMATION**

Polish **EXCELLENT**  
Symmetry **EXCELLENT**  
Fluorescence **NONE**  
Inscription(s) **IGI LG799651677**  
Comments: As Grown - No indication of post-growth treatment.  
This Laboratory Grown Diamond was created by High Pressure High Temperature (HPHT) growth process.  
Type II



**IGI**

May 20, 2026  
IGI Report No LG799651677  
SQUARE EMERALD CUT  
6.49 X 6.47 X 4.07 MM  
1.55 CARAT  
E  
VVS 1  
62.9%  
63%  
Medium  
Pointed  
EXCELLENT  
EXCELLENT  
NONE  
IGI LG799651677  
Comments: As Grown - No indication of post-growth treatment.  
This Laboratory Grown Diamond was created by High Pressure High Temperature (HPHT) growth process.  
Type II