



ELECTRONIC COPY

LG799649688
Report verification at igi.org



June 1, 2026
IGI Report Number **LG799649688**
Description **LABORATORY GROWN DIAMOND**
Shape and Cutting Style **ROUND BRILLIANT**
Measurements **6.50 - 6.53 X 3.94 MM**
GRADING RESULTS
Carat Weight **1.02 CARAT**
Color Grade **FANCY VIVID PINK**
Clarity Grade **VS 2**
Cut Grade **IDEAL**

June 1, 2026
IGI Report Number **LG799649688**
Description **LABORATORY GROWN DIAMOND**
Shape and Cutting Style **ROUND BRILLIANT**
Measurements **6.50 - 6.53 X 3.94 MM**

GRADING RESULTS

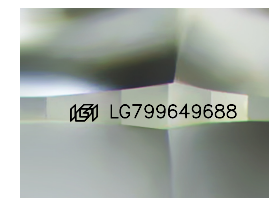
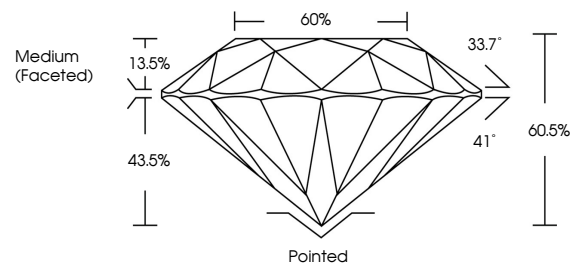
Carat Weight **1.02 CARAT**
Color Grade **FANCY VIVID PINK**
Clarity Grade **VS 2**
Cut Grade **IDEAL**

ADDITIONAL GRADING INFORMATION

Polish **EXCELLENT**
Symmetry **EXCELLENT**
Fluorescence **SLIGHT**
Inscription(s) **LG799649688**

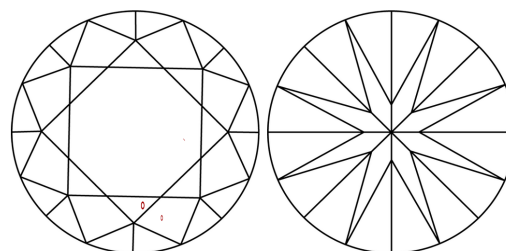
Comments: This Laboratory Grown Diamond was created by Chemical Vapor Deposition (CVD) growth process.
Indications of post-growth treatment.

PROPORTIONS



Sample Image Used

CLARITY CHARACTERISTICS



KEY TO SYMBOLS

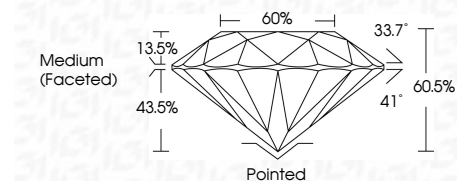
Red symbols indicate internal characteristics.
Green symbols indicate external characteristics.

COLOR

D E F G H I J Faint Very Light Light

CLARITY

FL	IF	VS ¹⁻²	VS ¹⁻²	SI ¹⁻²	I ¹⁻³
Flawless	Internally Flawless	Very Very Slightly Included	Very Slightly Included	Slightly Included	Included



ADDITIONAL GRADING INFORMATION

Polish **EXCELLENT**
Symmetry **EXCELLENT**
Fluorescence **SLIGHT**
Inscription(s) **LG799649688**
Comments: This Laboratory Grown Diamond was created by Chemical Vapor Deposition (CVD) growth process.
Indications of post-growth treatment.



June 1, 2026
IGI Report No LG799649688
ROUND BRILLIANT
6.50 - 6.53 X 3.94 MM
1.02 CARAT
FANCY VIVID PINK
VS 2
IDEAL
60.5%
Medium (Faceted)

Culet
Polish
Symmetry
Fluorescence
Inscription(s)

Pointed
EXCELLENT
EXCELLENT
SLIGHT
SLIGHT
IGI LG799649688

Comments: This Laboratory Grown Diamond was created by Chemical Vapor Deposition (CVD) growth process.
Indications of post-growth treatment.