



ELECTRONIC COPY

LG799649673
Report verification at igi.org



May 28, 2026
IGI Report Number **LG799649673**
Description **LABORATORY GROWN DIAMOND**
Shape and Cutting Style **ROUND BRILLIANT**
Measurements **6.34 - 6.38 X 3.79 MM**
GRADING RESULTS
Carat Weight **1.00 CARAT**
Color Grade **FANCY LIGHT BROWN**
Clarity Grade **VVS 2**
Cut Grade **GOOD**

May 28, 2026
IGI Report Number **LG799649673**
Description **LABORATORY GROWN DIAMOND**
Shape and Cutting Style **ROUND BRILLIANT**
Measurements **6.34 - 6.38 X 3.79 MM**

GRADING RESULTS

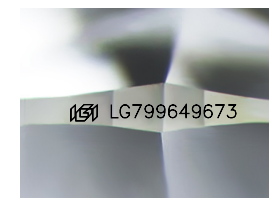
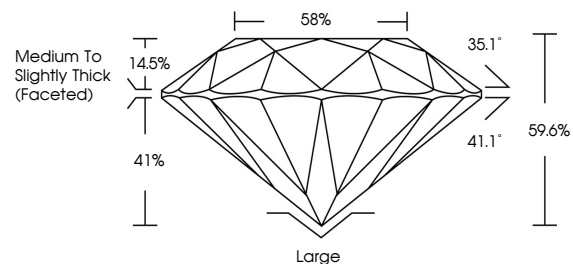
Carat Weight **1.00 CARAT**
Color Grade **FANCY LIGHT BROWN**
Clarity Grade **VVS 2**
Cut Grade **GOOD**

ADDITIONAL GRADING INFORMATION

Polish **EXCELLENT**
Symmetry **EXCELLENT**
Fluorescence **VERY SLIGHT**
Inscription(s) **LG799649673**

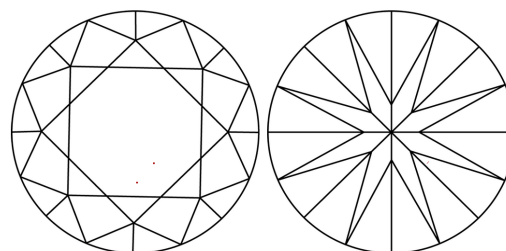
Comments: This Laboratory Grown Diamond was created by Chemical Vapor Deposition (CVD) growth process.

PROPORTIONS



Sample Image Used

CLARITY CHARACTERISTICS



KEY TO SYMBOLS

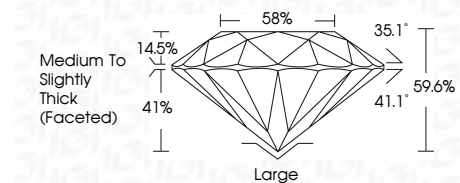
Red symbols indicate internal characteristics.
Green symbols indicate external characteristics.

COLOR

D E F G H I J Faint Very Light Light

CLARITY

| FL | IF | VVS ¹⁻² | VS ¹⁻² | SI ¹⁻² | I ¹⁻³ |
|----------|---------------------|-----------------------------|------------------------|-------------------|------------------|
| Flawless | Internally Flawless | Very Very Slightly Included | Very Slightly Included | Slightly Included | Included |



ADDITIONAL GRADING INFORMATION

Polish **EXCELLENT**
Symmetry **EXCELLENT**
Fluorescence **VERY SLIGHT**
Inscription(s) **LG799649673**
Comments: This Laboratory Grown Diamond was created by Chemical Vapor Deposition (CVD) growth process.



IGI



May 28, 2026
IGI Report No. **LG799649673**
ROUND BRILLIANT
6.34 - 6.38 X 3.79 MM
1.00 CARAT
FANCY LIGHT BROWN
VVS 2
GOOD
59.6%
58%
Medium To Slightly Thick (Faceted)
Large
EXCELLENT
EXCELLENT
VERY SLIGHT
IGI LG799649673
Comments: This Laboratory Grown Diamond was created by Chemical Vapor Deposition (CVD) growth process.