



ELECTRONIC COPY

LG799649568
Report verification at igi.org



May 20, 2026
IGI Report Number **LG799649568**
Description **LABORATORY GROWN DIAMOND**
Shape and Cutting Style **CUSHION MODIFIED BRILLIANT**
Measurements **9.80 X 8.06 X 5.39 MM**
GRADING RESULTS
Carat Weight **4.03 CARATS**
Color Grade **FANCY LIGHT BROWN**
Clarity Grade **VS 1**

May 20, 2026
IGI Report Number **LG799649568**
Description **LABORATORY GROWN DIAMOND**
Shape and Cutting Style **CUSHION MODIFIED BRILLIANT**
Measurements **9.80 X 8.06 X 5.39 MM**

GRADING RESULTS

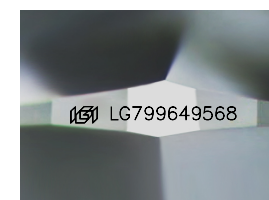
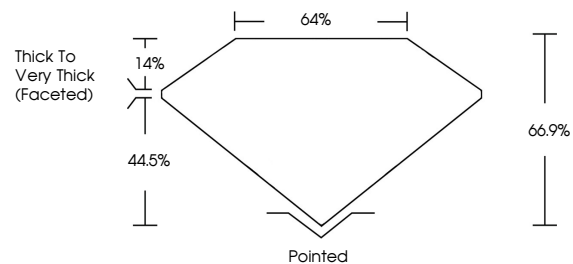
Carat Weight **4.03 CARATS**
Color Grade **FANCY LIGHT BROWN**
Clarity Grade **VS 1**

ADDITIONAL GRADING INFORMATION

Polish **VERY GOOD**
Symmetry **EXCELLENT**
Fluorescence **VERY SLIGHT**
Inscription(s) **IGI LG799649568**

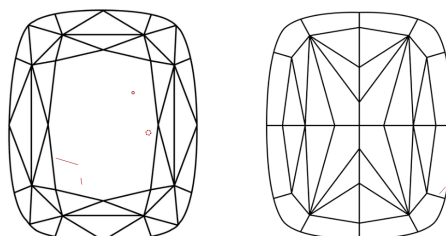
Comments: This Laboratory Grown Diamond was created by Chemical Vapor Deposition (CVD) growth process.
Type IIa

PROPORTIONS



Sample Image Used

CLARITY CHARACTERISTICS



KEY TO SYMBOLS

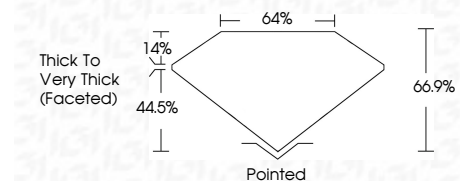
Red symbols indicate internal characteristics.
Green symbols indicate external characteristics.

COLOR

D E F G H I J Faint Very Light Light

CLARITY

FL	IF	VS ¹⁻²	VS ¹⁻²	SI ¹⁻²	I ¹⁻³
Flawless	Internally Flawless	Very Very Slightly Included	Very Slightly Included	Slightly Included	Included



ADDITIONAL GRADING INFORMATION

Polish **VERY GOOD**
Symmetry **EXCELLENT**
Fluorescence **VERY SLIGHT**
Inscription(s) **IGI LG799649568**
Comments: This Laboratory Grown Diamond was created by Chemical Vapor Deposition (CVD) growth process.
Type IIa



May 20, 2026
IGI Report No **LG799649568**
CUSHION MODIFIED BRILLIANT
4.03 CARATS
Carat Weight
Color Grade **FANCY LIGHT BROWN**
Clarity Grade **VS 1**
Depth **66.9%**
Table **64%**
Girdle
Thick to Very Thick (Faceted)
Culet Pointed
Polish **VERY GOOD**
Symmetry **EXCELLENT**
Fluorescence **VERY SLIGHT**
Inscription(s) **IGI LG799649568**
Comments: This Laboratory Grown Diamond was created by Chemical Vapor Deposition (CVD) growth process.
Type IIa