



**ELECTRONIC COPY**

LG799649542  
Report verification at igi.org



May 20, 2026

IGI Report Number **LG799649542**

Description **LABORATORY GROWN DIAMOND**

Shape and Cutting Style **PEAR BRILLIANT**

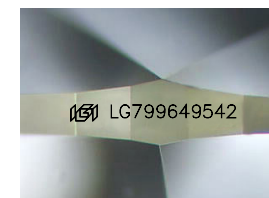
Measurements **10.60 X 6.43 X 3.95 MM**

**GRADING RESULTS**

Carat Weight **1.55 CARAT**

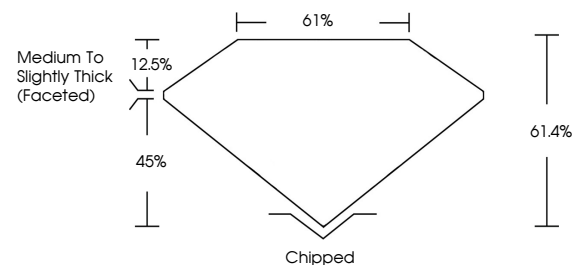
Color Grade **FANCY VIVID PINK**

Clarity Grade **VVS 2**

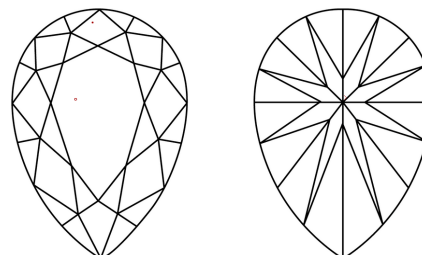


Sample Image Used

**PROPORTIONS**



**CLARITY CHARACTERISTICS**



**KEY TO SYMBOLS**

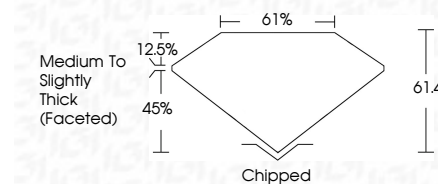
Red symbols indicate internal characteristics.  
Green symbols indicate external characteristics.

**COLOR**

D E F G H I J Faint Very Light Light

**CLARITY**

FL	IF	VVS <sup>1-2</sup>	VS <sup>1-2</sup>	SI <sup>1-2</sup>	I <sup>1-3</sup>
Flawless	Internally Flawless	Very Very Slightly Included	Very Slightly Included	Slightly Included	Included



**ADDITIONAL GRADING INFORMATION**

Polish **GOOD**

Symmetry **EXCELLENT**

Fluorescence **STRONG**

Inscription(s) **IGI LG799649542**

Comments: This Laboratory Grown Diamond was created by Chemical Vapor Deposition (CVD) growth process. Indications of post-growth treatment.



**IGI**



May 20, 2026	1.55 CARAT
IGI Report No LG799649542	FANCY VIVID PINK
PEAR BRILLIANT	VVS 2
10.60 X 6.43 X 3.95 MM	61.4%
Carat Weight	61%
Color Grade	Medium to Slightly Thick (Faceted)
Clarity Grade	Chipped
Depth	GOOD
Table	EXCELLENT
Graile	STRONG
Culet	IGI LG799649542
Polish	
Symmetry	
Fluorescence	
Inscription(s)	

Comments: This Laboratory Grown Diamond was created by Chemical Vapor Deposition (CVD) growth process. Indications of post-growth treatment.