



**ELECTRONIC COPY**

LG799649536  
Report verification at igi.org



May 20, 2026  
IGI Report Number **LG799649536**  
Description **LABORATORY GROWN DIAMOND**  
Shape and Cutting Style **CUSHION MODIFIED BRILLIANT**  
Measurements **8.10 X 5.73 X 3.66 MM**  
**GRADING RESULTS**  
Carat Weight **1.51 CARAT**  
Color Grade **FANCY INTENSE YELLOW**  
Clarity Grade **VS 1**

May 20, 2026  
IGI Report Number **LG799649536**  
Description **LABORATORY GROWN DIAMOND**  
Shape and Cutting Style **CUSHION MODIFIED BRILLIANT**  
Measurements **8.10 X 5.73 X 3.66 MM**

**GRADING RESULTS**

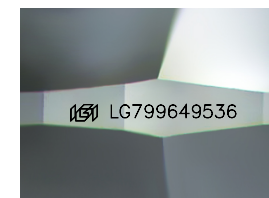
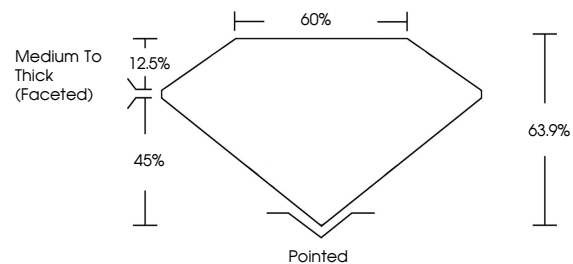
Carat Weight **1.51 CARAT**  
Color Grade **FANCY INTENSE YELLOW**  
Clarity Grade **VS 1**

**ADDITIONAL GRADING INFORMATION**

Polish **EXCELLENT**  
Symmetry **EXCELLENT**  
Fluorescence **NONE**  
Inscription(s) **IGI LG799649536**

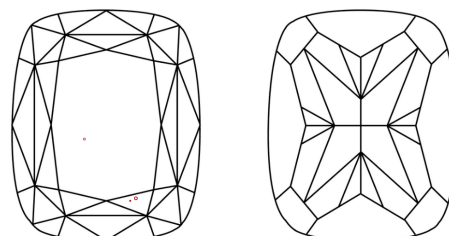
Comments: This Laboratory Grown Diamond was created by Chemical Vapor Deposition (CVD) growth process.

**PROPORTIONS**



Sample Image Used

**CLARITY CHARACTERISTICS**



**KEY TO SYMBOLS**

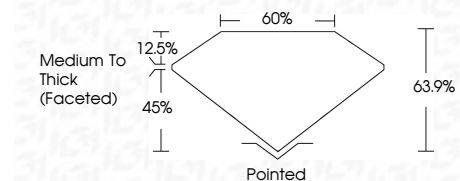
Red symbols indicate internal characteristics.  
Green symbols indicate external characteristics.

**COLOR**

D E F G H I J Faint Very Light Light

**CLARITY**

FL	IF	VS <sup>1-2</sup>	VS <sup>1-2</sup>	SI <sup>1-2</sup>	I <sup>1-3</sup>
Flawless	Internally Flawless	Very Very Slightly Included	Very Slightly Included	Slightly Included	Included



**ADDITIONAL GRADING INFORMATION**

Polish **EXCELLENT**  
Symmetry **EXCELLENT**  
Fluorescence **NONE**  
Inscription(s) **IGI LG799649536**  
Comments: This Laboratory Grown Diamond was created by Chemical Vapor Deposition (CVD) growth process.



**IGI**



May 20, 2026  
IGI Report No **LG799649536**  
**CUSHION MODIFIED BRILLIANT**  
Carat Weight **1.51 CARAT**  
Color Grade **FANCY INTENSE YELLOW**  
Clarity Grade **VS 1**  
Depth **63.9%**  
Table **45%**  
Girdle **Medium To Thick (Faceted)**  
Culet **Pointed**  
Polish **EXCELLENT**  
Symmetry **EXCELLENT**  
Fluorescence **NONE**  
Inscription(s) **IGI LG799649536**  
Comments: This Laboratory Grown Diamond was created by Chemical Vapor Deposition (CVD) growth process.