



ELECTRONIC COPY

LG799649534
Report verification at igi.org



May 20, 2026
IGI Report Number **LG799649534**
Description **LABORATORY GROWN DIAMOND**
Shape and Cutting Style **SQUARE CUSHION MODIFIED BRILLIANT**
Measurements **6.47 X 6.45 X 4.50 MM**
GRADING RESULTS
Carat Weight **1.53 CARAT**
Color Grade **FANCY VIVID GREEN**
Clarity Grade **VS 2**

May 20, 2026
IGI Report Number **LG799649534**
Description **LABORATORY GROWN DIAMOND**
Shape and Cutting Style **SQUARE CUSHION MODIFIED BRILLIANT**
Measurements **6.47 X 6.45 X 4.50 MM**

GRADING RESULTS

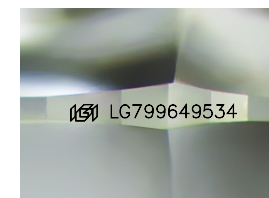
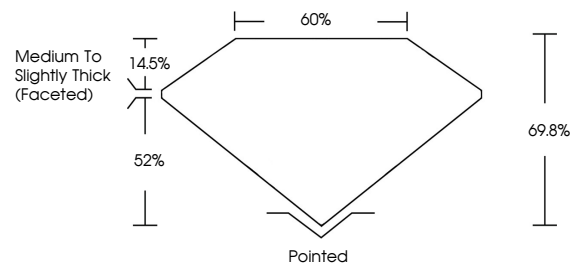
Carat Weight **1.53 CARAT**
Color Grade **FANCY VIVID GREEN**
Clarity Grade **VS 2**

ADDITIONAL GRADING INFORMATION

Polish **EXCELLENT**
Symmetry **EXCELLENT**
Fluorescence **VERY SLIGHT**
Inscription(s) **IGI LG799649534**

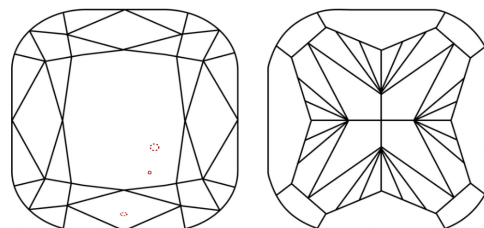
Comments: This Laboratory Grown Diamond was created by Chemical Vapor Deposition (CVD) growth process.
Indications of post-growth treatment.

PROPORTIONS



Sample Image Used

CLARITY CHARACTERISTICS



KEY TO SYMBOLS

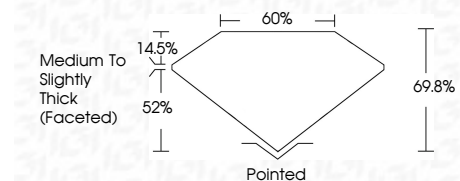
Red symbols indicate internal characteristics.
Green symbols indicate external characteristics.

COLOR

D E F G H I J Faint Very Light Light

CLARITY

FL	IF	VS ¹⁻²	VS ¹⁻²	SI ¹⁻²	I ¹⁻³
Flawless	Internally Flawless	Very Very Slightly Included	Very Slightly Included	Slightly Included	Included



ADDITIONAL GRADING INFORMATION

Polish **EXCELLENT**
Symmetry **EXCELLENT**
Fluorescence **VERY SLIGHT**
Inscription(s) **IGI LG799649534**
Comments: This Laboratory Grown Diamond was created by Chemical Vapor Deposition (CVD) growth process.
Indications of post-growth treatment.



May 20, 2026
IGI Report No. LG799649534
SQUARE CUSHION MODIFIED BRILLIANT
6.47 X 6.45 X 4.50 MM
1.53 CARAT
FANCY VIVID GREEN
VS 2
69.8%
52%
14.5%
Medium to Slightly Thick (Faceted)
Pointed
EXCELLENT
EXCELLENT
VERY SLIGHT
IGI LG799649534
Comments: This Laboratory Grown Diamond was created by Chemical Vapor Deposition (CVD) growth process.
Indications of post-growth treatment.