



**ELECTRONIC COPY**

LG799649480  
Report verification at igi.org



May 19, 2026  
IGI Report Number **LG799649480**

Description **LABORATORY GROWN DIAMOND**

Shape and Cutting Style **CUT CORNERED  
RECTANGULAR MODIFIED  
BRILLIANT**

Measurements **8.69 X 5.93 X 3.37 MM**

**GRADING RESULTS**

Carat Weight **1.53 CARAT**

Color Grade **FANCY VIVID BLUE**

Clarity Grade **VVS 2**

**LABORATORY GROWN DIAMOND REPORT**

May 19, 2026

IGI Report Number **LG799649480**

Description **LABORATORY GROWN DIAMOND**

Shape and Cutting Style **CUT CORNERED RECTANGULAR  
MODIFIED BRILLIANT**

Measurements **8.69 X 5.93 X 3.37 MM**

**GRADING RESULTS**

Carat Weight **1.53 CARAT**

Color Grade **FANCY VIVID BLUE**

Clarity Grade **VVS 2**

**ADDITIONAL GRADING INFORMATION**

Polish **VERY GOOD**

Symmetry **EXCELLENT**

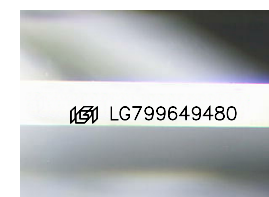
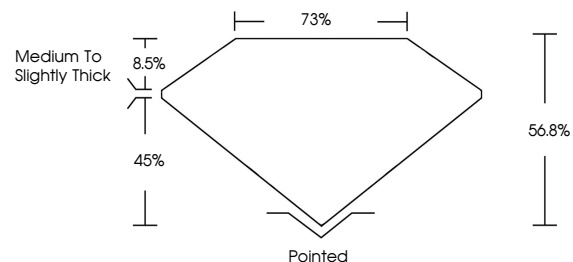
Fluorescence **NONE**

Inscription(s) **IGI LG799649480**

Comments: This Laboratory Grown Diamond was created by Chemical Vapor Deposition (CVD) growth process.

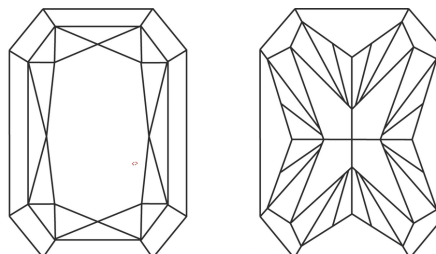
Indications of post-growth treatment.

**PROPORTIONS**



Sample Image Used

**CLARITY CHARACTERISTICS**



**KEY TO SYMBOLS**

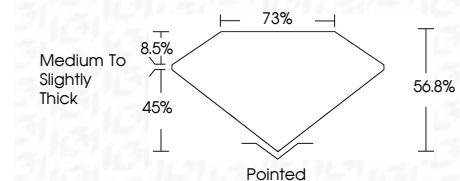
Red symbols indicate internal characteristics.  
Green symbols indicate external characteristics.

**COLOR**

D E F G H I J Faint Very Light Light

**CLARITY**

FL	IF	VVS <sup>1-2</sup>	VS <sup>1-2</sup>	SI <sup>1-2</sup>	I <sup>1-3</sup>
Flawless	Internally Flawless	Very Very Slightly Included	Very Slightly Included	Slightly Included	Included



**ADDITIONAL GRADING INFORMATION**

Polish **VERY GOOD**

Symmetry **EXCELLENT**

Fluorescence **NONE**

Inscription(s) **IGI LG799649480**

Comments: This Laboratory Grown Diamond was created by Chemical Vapor Deposition (CVD) growth process. Indications of post-growth treatment.



May 19, 2026  
IGI Report No LG799649480  
CUT CORNERED RECT. MODIFIED BRILLIANT  
8.69 X 5.93 X 3.37 MM  
1.53 CARAT  
FANCY VIVID BLUE  
VVS 2  
56.8%  
75%  
Medium to Slightly Thick  
Pointed  
VERY GOOD  
EXCELLENT  
NONE  
IGI LG799649480

Comments: This Laboratory Grown Diamond was created by Chemical Vapor Deposition (CVD) growth process. Indications of post-growth treatment.