



ELECTRONIC COPY

LG799649385
Report verification at igi.org



May 19, 2026

IGI Report Number **LG799649385**

Description **LABORATORY GROWN DIAMOND**

Shape and Cutting Style **OLD EUROPEAN CUT**

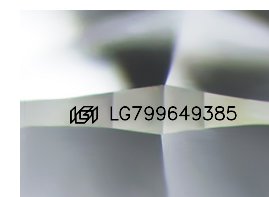
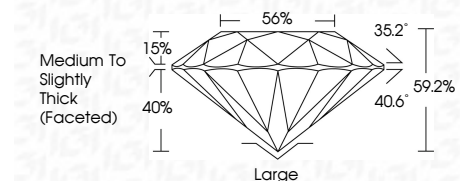
Measurements **6.42 - 6.46 X 3.81 MM**

GRADING RESULTS

Carat Weight **1.03 CARAT**

Color Grade **VERY LIGHT BROWN**

Clarity Grade **VVS 2**



Sample Image Used

ADDITIONAL GRADING INFORMATION

Polish **EXCELLENT**

Symmetry **EXCELLENT**

Fluorescence **VERY SLIGHT**

Inscription(s) **IGI LG799649385**

Comments: This Laboratory Grown Diamond was created by Chemical Vapor Deposition (CVD) growth process. Type IIa



May 19, 2026	IGI Report No LG799649385	1.03 CARAT	VERY LIGHT BROWN	VVS 2	60%	Medium to Slightly Thick (Faceted)	Large
6.42 - 6.46 X 3.81 MM	OLD EUROPEAN CUT	Color Grade	Clarity Grade	Table	Girdle	Culet	Polish
							Symmetry
							Fluorescence
							Inscription(s)

Comments: This Laboratory Grown Diamond was created by Chemical Vapor Deposition (CVD) growth process. Type IIa

May 19, 2026
IGI Report Number **LG799649385**
Description **LABORATORY GROWN DIAMOND**
Shape and Cutting Style **OLD EUROPEAN CUT**
Measurements **6.42 - 6.46 X 3.81 MM**

GRADING RESULTS

Carat Weight **1.03 CARAT**

Color Grade **VERY LIGHT BROWN**

Clarity Grade **VVS 2**

ADDITIONAL GRADING INFORMATION

Polish **EXCELLENT**

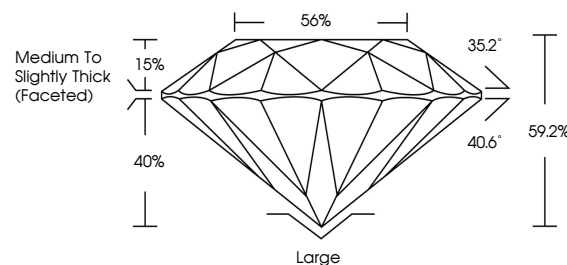
Symmetry **EXCELLENT**

Fluorescence **VERY SLIGHT**

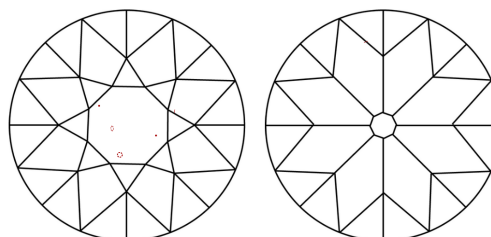
Inscription(s) **IGI LG799649385**

Comments: This Laboratory Grown Diamond was created by Chemical Vapor Deposition (CVD) growth process. Type IIa

PROPORTIONS



CLARITY CHARACTERISTICS



KEY TO SYMBOLS

Red symbols indicate internal characteristics.
Green symbols indicate external characteristics.

COLOR

D E F G H I J Faint Very Light Light

CLARITY

FL	IF	VVS ¹⁻²	VS ¹⁻²	SI ¹⁻²	I ¹⁻³
Flawless	Internally Flawless	Very Very Slightly Included	Very Slightly Included	Slightly Included	Included



May 19, 2026
IGI Report No LG799649385
OLD EUROPEAN CUT

1.03 CARAT
VERY LIGHT BROWN
VVS 2
60%
Medium to Slightly Thick (Faceted)
Large
EXCELLENT
EXCELLENT
VERY SLIGHT
IGI LG799649385

Comments: This Laboratory Grown Diamond was created by Chemical Vapor Deposition (CVD) growth process. Type IIa