



ELECTRONIC COPY

LG799649383
Report verification at igi.org



May 19, 2026

IGI Report Number **LG799649383**

Description **LABORATORY GROWN DIAMOND**

Shape and Cutting Style **PRINCESS CUT**

Measurements **6.85 X 6.83 X 4.89 MM**

GRADING RESULTS

Carat Weight **2.03 CARATS**

Color Grade **LIGHT BROWN**

Clarity Grade **VVS 2**

LABORATORY GROWN DIAMOND REPORT

May 19, 2026

IGI Report Number **LG799649383**

Description **LABORATORY GROWN DIAMOND**

Shape and Cutting Style **PRINCESS CUT**

Measurements **6.85 X 6.83 X 4.89 MM**

GRADING RESULTS

Carat Weight **2.03 CARATS**

Color Grade **LIGHT BROWN**

Clarity Grade **VVS 2**

ADDITIONAL GRADING INFORMATION

Polish **VERY GOOD**

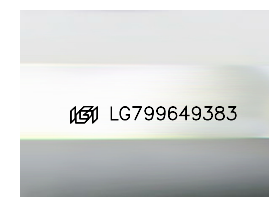
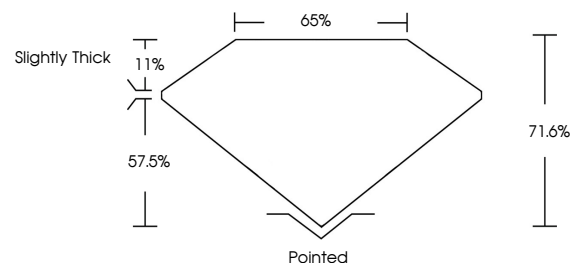
Symmetry **VERY GOOD**

Fluorescence **VERY SLIGHT**

Inscription(s) **IGI LG799649383**

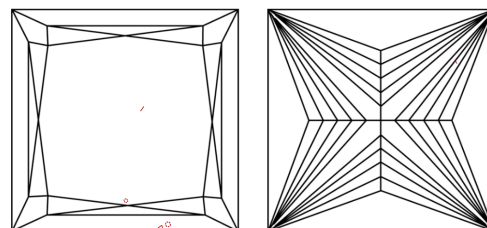
Comments: This Laboratory Grown Diamond was created by Chemical Vapor Deposition (CVD) growth process. Type IIa

PROPORTIONS



Sample Image Used

CLARITY CHARACTERISTICS



KEY TO SYMBOLS

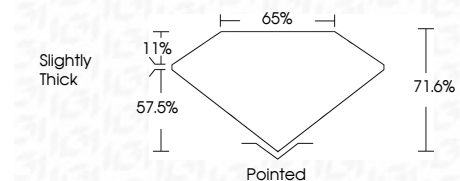
Red symbols indicate internal characteristics.
Green symbols indicate external characteristics.

COLOR

D E F G H I J Faint Very Light Light

CLARITY

FL	IF	VVS ¹⁻²	VS ¹⁻²	SI ¹⁻²	I ¹⁻³
Flawless	Internally Flawless	Very Very Slightly Included	Very Slightly Included	Slightly Included	Included



ADDITIONAL GRADING INFORMATION

Polish **VERY GOOD**

Symmetry **VERY GOOD**

Fluorescence **VERY SLIGHT**

Inscription(s) **IGI LG799649383**

Comments: This Laboratory Grown Diamond was created by Chemical Vapor Deposition (CVD) growth process. Type IIa



May 19, 2026
IGI Report No. LG799649383
PRINCESS CUT
2.03 CARATS
LIGHT BROWN
Carat Weight
Color Grade
Clarity Grade
Depth
Table
Girdle
Culet
Polish
Symmetry
Fluorescence
Inscription(s)
2.03 CARATS
LIGHT BROWN
VVS 2
71.6%
65%
Slightly Thick
Pointed
VERY GOOD
VERY GOOD
VERY SLIGHT
IGI LG799649383
Comments: This Laboratory Grown Diamond was created by Chemical Vapor Deposition (CVD) growth process. Type IIa