



ELECTRONIC COPY

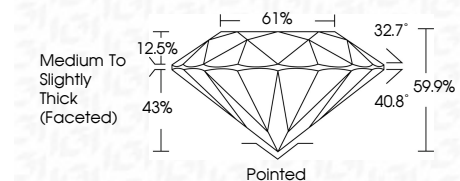
LG799649371
Report verification at igi.org



May 21, 2026
IGI Report Number **LG799649371**
Description **LABORATORY GROWN DIAMOND**
Shape and Cutting Style **ROUND BRILLIANT**
Measurements **6.44 - 6.48 X 3.87 MM**

GRADING RESULTS

Carat Weight **1.00 CARAT**
Color Grade **Q-R**
Clarity Grade **VVS 2**
Cut Grade **EXCELLENT**



ADDITIONAL GRADING INFORMATION

Polish **EXCELLENT**
Symmetry **EXCELLENT**
Fluorescence **VERY SLIGHT**
Inscription(s) **IGI LG799649371**
Comments: This Laboratory Grown Diamond was created by Chemical Vapor Deposition (CVD) growth process.
Type IIa
Very Light Brown



May 21, 2026
IGI Report No LG799649371
ROUND BRILLIANT
6.44 - 6.48 X 3.87 MM
1.00 CARAT
Q-R
VVS 2
EXCELLENT
61%
32.7°
40.8°
43%
12.5%
59.9%
Medium To Slightly Thick (Faceted)
Pointed
EXCELLENT
EXCELLENT
VERY SLIGHT
IGI LG799649371
Comments: This Laboratory Grown Diamond was created by Chemical Vapor Deposition (CVD) growth process.
Type IIa
Very Light Brown

May 21, 2026
IGI Report Number **LG799649371**
Description **LABORATORY GROWN DIAMOND**
Shape and Cutting Style **ROUND BRILLIANT**
Measurements **6.44 - 6.48 X 3.87 MM**

GRADING RESULTS

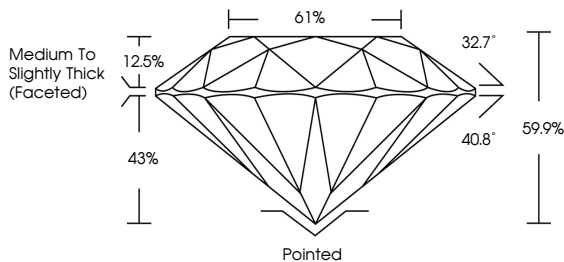
Carat Weight **1.00 CARAT**
Color Grade **Q-R**
Clarity Grade **VVS 2**
Cut Grade **EXCELLENT**

ADDITIONAL GRADING INFORMATION

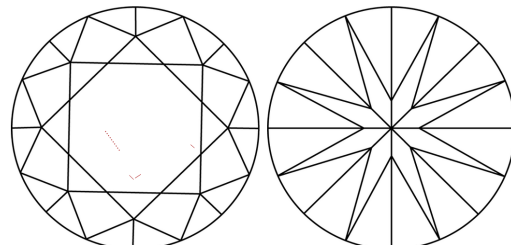
Polish **EXCELLENT**
Symmetry **EXCELLENT**
Fluorescence **VERY SLIGHT**
Inscription(s) **IGI LG799649371**

Comments: This Laboratory Grown Diamond was created by Chemical Vapor Deposition (CVD) growth process.
Type IIa
Very Light Brown

PROPORTIONS

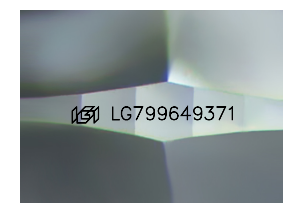


CLARITY CHARACTERISTICS



KEY TO SYMBOLS

Red symbols indicate internal characteristics.
Green symbols indicate external characteristics.



Sample Image Used

COLOR

D	E	F	G	H	I	J	Faint	Very Light	Light
---	---	---	---	---	---	---	-------	------------	-------

CLARITY

FL	IF	VVS ¹⁻²	VS ¹⁻²	SI ¹⁻²	I ¹⁻³
Flawless	Internally Flawless	Very Very Slightly Included	Very Slightly Included	Slightly Included	Included

