



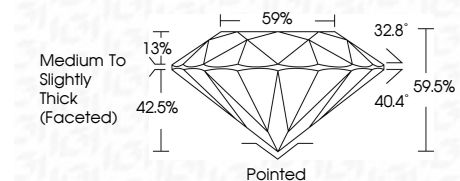
ELECTRONIC COPY

LG799649369
Report verification at igi.org



May 21, 2026
IGI Report Number **LG799649369**
Description **LABORATORY GROWN DIAMOND**
Shape and Cutting Style **ROUND BRILLIANT**
Measurements **8.17 - 8.24 X 4.88 MM**

GRADING RESULTS
Carat Weight **2.01 CARATS**
Color Grade **O-P**
Clarity Grade **VVS 2**
Cut Grade **IDEAL**



ADDITIONAL GRADING INFORMATION
Polish **VERY GOOD**
Symmetry **EXCELLENT**
Fluorescence **VERY SLIGHT**
Inscription(s) **IGI LG799649369**
Comments: This Laboratory Grown Diamond was created by Chemical Vapor Deposition (CVD) growth process.
Type IIa
Very Light Brown



May 21, 2026
IGI Report No LG799649369
ROUND BRILLIANT
8.17 - 8.24 X 4.88 MM
2.01 CARATS
O-P
VVS 2
IDEAL
59.5%
59%
Medium To Slightly Thick (Faceted)
Pointed
VERY GOOD
EXCELLENT
VERY SLIGHT
IGI LG799649369
Inscription(s)
Comments: This Laboratory Grown Diamond was created by Chemical Vapor Deposition (CVD) growth process.
Type IIa
Very Light Brown

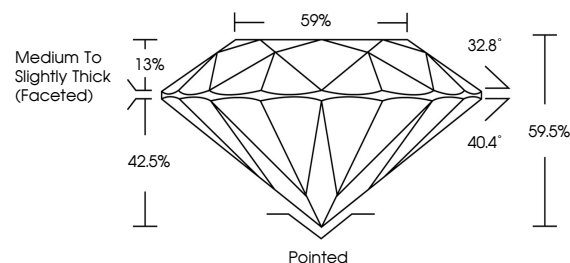
May 21, 2026
IGI Report Number **LG799649369**
Description **LABORATORY GROWN DIAMOND**
Shape and Cutting Style **ROUND BRILLIANT**
Measurements **8.17 - 8.24 X 4.88 MM**

GRADING RESULTS
Carat Weight **2.01 CARATS**
Color Grade **O-P**
Clarity Grade **VVS 2**
Cut Grade **IDEAL**

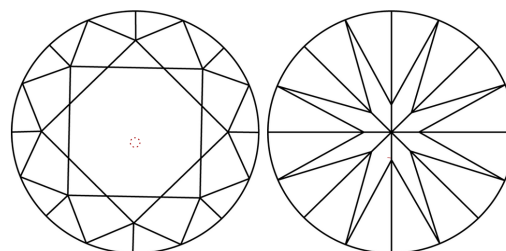
ADDITIONAL GRADING INFORMATION
Polish **VERY GOOD**
Symmetry **EXCELLENT**
Fluorescence **VERY SLIGHT**
Inscription(s) **IGI LG799649369**

Comments: This Laboratory Grown Diamond was created by Chemical Vapor Deposition (CVD) growth process.
Type IIa
Very Light Brown

PROPORTIONS

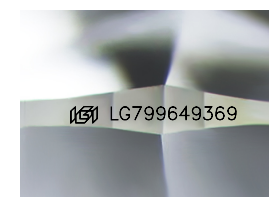


CLARITY CHARACTERISTICS



KEY TO SYMBOLS

Red symbols indicate internal characteristics.
Green symbols indicate external characteristics.



Sample Image Used

COLOR

D E F G H I J Faint Very Light Light

CLARITY

FL	IF	VVS ¹⁻²	VS ¹⁻²	SI ¹⁻²	I ¹⁻³
Flawless	Internally Flawless	Very Very Slightly Included	Very Slightly Included	Slightly Included	Included

