



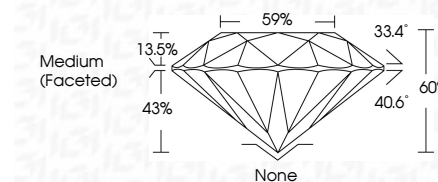
ELECTRONIC COPY

LG799649368
Report verification at igi.org



May 21, 2026
IGI Report Number **LG799649368**
Description **LABORATORY GROWN DIAMOND**
Shape and Cutting Style **ROUND BRILLIANT**
Measurements **7.44 - 7.50 X 4.48 MM**

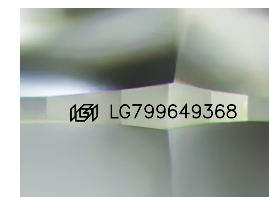
GRADING RESULTS
Carat Weight **1.53 CARAT**
Color Grade **Q-R**
Clarity Grade **VS 1**
Cut Grade **IDEAL**



ADDITIONAL GRADING INFORMATION
Polish **EXCELLENT**
Symmetry **EXCELLENT**
Fluorescence **VERY SLIGHT**
Inscription(s) **IGI LG799649368**
Comments: This Laboratory Grown Diamond was created by Chemical Vapor Deposition (CVD) growth process.
Type IIa
Very Light Brown

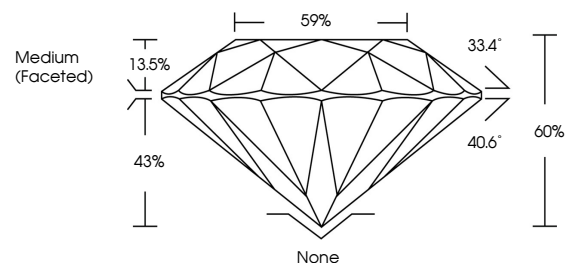


May 21, 2026
IGI Report No LG799649368
ROUND BRILLIANT
7.44 - 7.50 X 4.48 MM
1.53 CARAT
Q-R
VS 1
IDEAL
60%
59%
Medium (Faceted)
None
EXCELLENT
EXCELLENT
VERY SLIGHT
IGI LG799649368
Comments: This Laboratory Grown Diamond was created by Chemical Vapor Deposition (CVD) growth process.
Type IIa
Very Light Brown

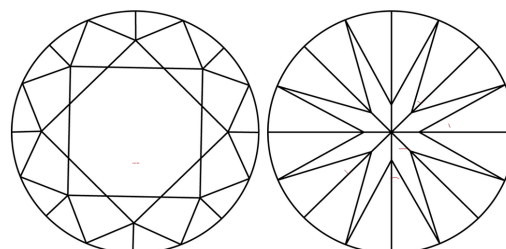


Sample Image Used

PROPORTIONS



CLARITY CHARACTERISTICS



KEY TO SYMBOLS

Red symbols indicate internal characteristics.
Green symbols indicate external characteristics.

COLOR

D E F G H I J Faint Very Light Light

CLARITY

FL	IF	VS ¹⁻²	VS ¹⁻²	SI ¹⁻²	I ¹⁻³
Flawless	Internally Flawless	Very Very Slightly Included	Very Slightly Included	Slightly Included	Included

