



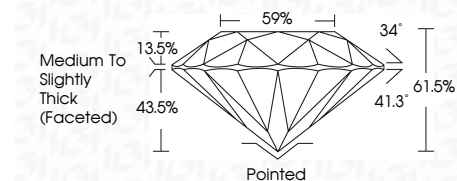
ELECTRONIC COPY

LG799649031 Report verification at igi.org



June 26, 2026 IGI Report Number LG799649031 Description LABORATORY GROWN DIAMOND Shape and Cutting Style ROUND BRILLIANT Measurements 6.41 - 6.46 X 3.95 MM

GRADING RESULTS Carat Weight 1.01 CARAT Color Grade E Clarity Grade VS 2 Cut Grade IDEAL



ADDITIONAL GRADING INFORMATION Polish EXCELLENT Symmetry EXCELLENT Fluorescence NONE Inscription(s) IGI LG799649031 Comments: This Laboratory Grown Diamond was created by Chemical Vapor Deposition (CVD) growth process. Type IIa



June 26, 2026 IGI Report No LG799649031 ROUND BRILLIANT 6.41 - 6.46 X 3.95 MM 1.01 CARAT E VS 2 IDEAL 61.5% 59% Medium To Slightly Thick (Faceted) Pointed EXCELLENT EXCELLENT NONE IGI LG799649031

Comments: This Laboratory Grown Diamond was created by Chemical Vapor Deposition (CVD) growth process. Type IIa

LABORATORY GROWN DIAMOND REPORT

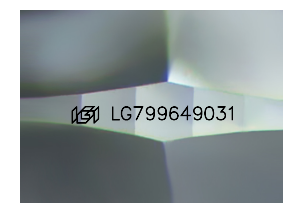
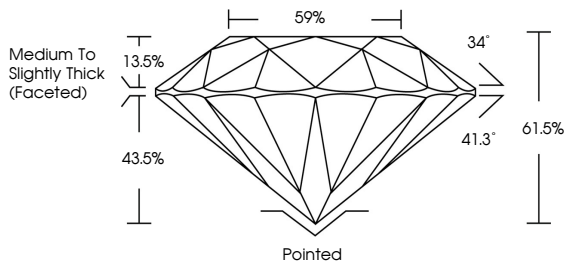
June 26, 2026 IGI Report Number LG799649031 Description LABORATORY GROWN DIAMOND Shape and Cutting Style ROUND BRILLIANT Measurements 6.41 - 6.46 X 3.95 MM

GRADING RESULTS Carat Weight 1.01 CARAT Color Grade E Clarity Grade VS 2 Cut Grade IDEAL

ADDITIONAL GRADING INFORMATION Polish EXCELLENT Symmetry EXCELLENT Fluorescence NONE Inscription(s) IGI LG799649031

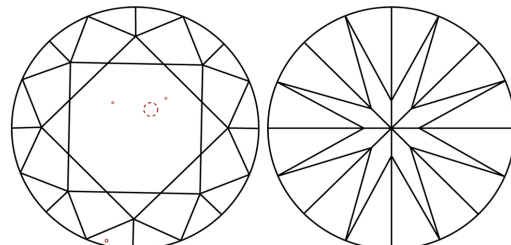
Comments: This Laboratory Grown Diamond was created by Chemical Vapor Deposition (CVD) growth process. Type IIa

PROPORTIONS



Sample Image Used

CLARITY CHARACTERISTICS



KEY TO SYMBOLS Red symbols indicate internal characteristics. Green symbols indicate external characteristics.

Color scale table with categories D, E, F, G, H, I, J, Faint, Very Light, Light

Clarity scale table with categories FL, IF, VS 1-2, VS 1-2, SI 1-2, I 1-3

