



June 30, 2026

IGI Report Number **LG799646900**

PEAR BRILLIANT

LABORATORY GROWN DIAMOND

8.55 X 5.05 X 3.18 MM

Carat Weight **0.79 CARAT**

Color Grade **D**

Clarity Grade **FLAWLESS**

Polish **EXCELLENT**

Symmetry **EXCELLENT**

Fluorescence **NONE**

Inscription(s) **IGI LG799646900**

Comments: As Grown - No indication of post-growth treatment. This Laboratory Grown Diamond was created by High Pressure High Temperature (HPHT) growth process. Type II

LABORATORY GROWN DIAMOND REPORT

June 30, 2026

IGI Report Number

LG799646900

Description

LABORATORY GROWN DIAMOND

Shape and Cutting Style

PEAR BRILLIANT

Measurements

8.55 X 5.05 X 3.18 MM

GRADING RESULTS

Carat Weight

0.79 CARAT

Color Grade

D

Clarity Grade

FLAWLESS

ADDITIONAL GRADING INFORMATION

Polish

EXCELLENT

Symmetry

EXCELLENT

Fluorescence

NONE

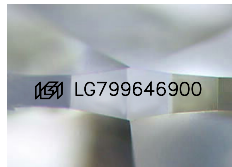
Inscription(s)

IGI LG799646900

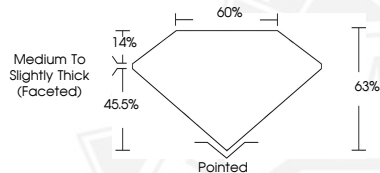
Comments: As Grown - No indication of post-growth treatment.

This Laboratory Grown Diamond was created by High Pressure High Temperature (HPHT) growth process.

Type II



Sample Image Used



June 30, 2026

IGI Report Number **LG799646900**

PEAR BRILLIANT

LABORATORY GROWN DIAMOND

8.55 X 5.05 X 3.18 MM

Carat Weight **0.79 CARAT**

Color Grade **D**

Clarity Grade **FLAWLESS**

Polish **EXCELLENT**

Symmetry **EXCELLENT**

Fluorescence **NONE**

Inscription(s) **IGI LG799646900**

Comments: As Grown - No indication of post-growth treatment. This Laboratory Grown Diamond was created by High Pressure High Temperature (HPHT) growth process. Type II



THIS DOCUMENT WAS PRODUCED WITH THE FOLLOWING SECURITY MEASURES: SPECIAL DOCUMENT PAPER, INK SCREENS, WATERMARK, BACKGROUND DESIGNS, HOLOGRAM AND OTHER SECURITY FEATURES NOT LISTED AND DO EXCEED DOCUMENT SECURITY INDUSTRY GUIDELINES.