



ELECTRONIC COPY

LG799645782
Report verification at igi.org



June 9, 2026
IGI Report Number **LG799645782**
Description **LABORATORY GROWN DIAMOND**
Shape and Cutting Style **ROUND BRILLIANT**
Measurements **8.00 - 8.03 X 5.03 MM**
GRADING RESULTS
Carat Weight **2.04 CARATS**
Color Grade **D**
Clarity Grade **VVS 2**
Cut Grade **EXCELLENT**

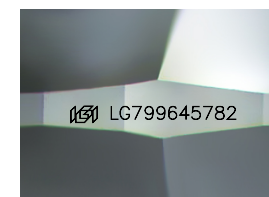
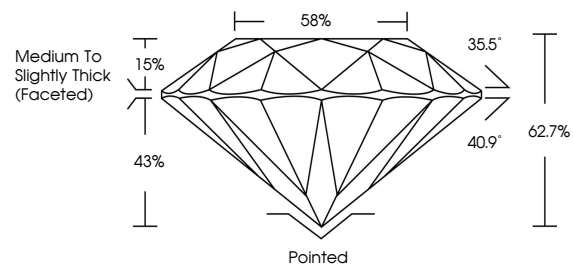
June 9, 2026
IGI Report Number **LG799645782**
Description **LABORATORY GROWN DIAMOND**
Shape and Cutting Style **ROUND BRILLIANT**
Measurements **8.00 - 8.03 X 5.03 MM**
GRADING RESULTS
Carat Weight **2.04 CARATS**
Color Grade **D**
Clarity Grade **VVS 2**
Cut Grade **EXCELLENT**

ADDITIONAL GRADING INFORMATION

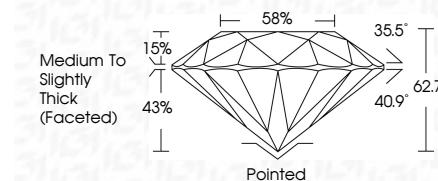
Polish **EXCELLENT**
Symmetry **EXCELLENT**
Fluorescence **NONE**
Inscription(s) **IGI LG799645782**

Comments: This Laboratory Grown Diamond was created by Chemical Vapor Deposition (CVD) growth process. Type IIa

PROPORTIONS



Sample Image Used



COLOR

D E F G H I J Faint Very Light Light

CLARITY

FL	IF	VS ¹⁻²	VS ¹⁻²	SI ¹⁻²	I ¹⁻³
Flawless	Internally Flawless	Very Very Slightly Included	Very Slightly Included	Slightly Included	Included

ADDITIONAL GRADING INFORMATION

Polish **EXCELLENT**
Symmetry **EXCELLENT**
Fluorescence **NONE**
Inscription(s) **IGI LG799645782**
Comments: This Laboratory Grown Diamond was created by Chemical Vapor Deposition (CVD) growth process. Type IIa



June 9, 2026
IGI Report No **LG799645782**
ROUND BRILLIANT
8.00 - 8.03 X 5.03 MM
2.04 CARATS
Color Grade **D**
Clarity Grade **VVS 2**
Depth **62.7%**
Table **88%**
Girdle **Medium To Slightly Thick (Faceted)**
Culet **Pointed**
Polish **EXCELLENT**
Symmetry **EXCELLENT**
Fluorescence **NONE**
Inscription(s) **IGI LG799645782**
Comments: This Laboratory Grown Diamond was created by Chemical Vapor Deposition (CVD) growth process. Type IIa