



June 9, 2026

IGI Report Number **LG799644044**

OVAL BRILLIANT

LABORATORY GROWN DIAMOND

7.79 X 5.27 X 3.23 MM

Carat Weight **0.82 CARAT**

Color Grade **D**

Clarity Grade **FLAWLESS**

Polish **EXCELLENT**

Symmetry **EXCELLENT**

Fluorescence **NONE**

Inscription(s) **IGI LG799644044**

Comments: As Grown - No indication of post-growth treatment. This Laboratory Grown Diamond was created by High Pressure High Temperature (HPHT) growth process. Type II

LABORATORY GROWN DIAMOND REPORT

June 9, 2026
IGI Report Number **LG799644044**
Description **LABORATORY GROWN DIAMOND**
Shape and Cutting Style **OVAL BRILLIANT**
Measurements **7.79 X 5.27 X 3.23 MM**

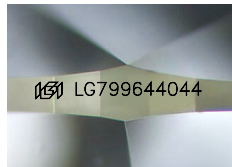
GRADING RESULTS

Carat Weight **0.82 CARAT**
Color Grade **D**
Clarity Grade **FLAWLESS**

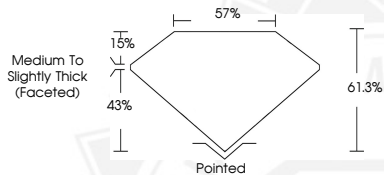
ADDITIONAL GRADING INFORMATION

Polish **EXCELLENT**
Symmetry **EXCELLENT**
Fluorescence **NONE**
Inscription(s) **IGI LG799644044**

Comments: As Grown - No indication of post-growth treatment. This Laboratory Grown Diamond was created by High Pressure High Temperature (HPHT) growth process. Type II



Sample Image Used



June 9, 2026

IGI Report Number **LG799644044**

OVAL BRILLIANT

LABORATORY GROWN DIAMOND

7.79 X 5.27 X 3.23 MM

Carat Weight **0.82 CARAT**

Color Grade **D**

Clarity Grade **FLAWLESS**

Polish **EXCELLENT**

Symmetry **EXCELLENT**

Fluorescence **NONE**

Inscription(s) **IGI LG799644044**

Comments: As Grown - No indication of post-growth treatment. This Laboratory Grown Diamond was created by High Pressure High Temperature (HPHT) growth process. Type II



THIS DOCUMENT WAS PRODUCED WITH THE FOLLOWING SECURITY MEASURES: SPECIAL DOCUMENT PAPER, INK SCREENS, WATERMARK, BACKGROUND DESIGNS, HOLOGRAM AND OTHER SECURITY FEATURES NOT LISTED AND DO EXCEED DOCUMENT SECURITY INDUSTRY GUIDELINES.