



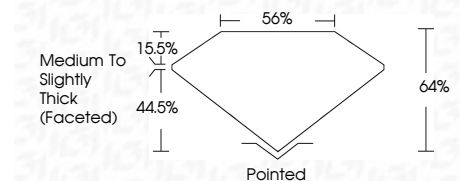
ELECTRONIC COPY

LG799643764
Report verification at igi.org



June 8, 2026
IGI Report Number **LG799643764**
Description **LABORATORY GROWN DIAMOND**
Shape and Cutting Style **PEAR BRILLIANT**
Measurements **8.59 X 5.50 X 3.52 MM**

GRADING RESULTS
Carat Weight **1.00 CARAT**
Color Grade **D**
Clarity Grade **VVS 2**



ADDITIONAL GRADING INFORMATION
Polish **EXCELLENT**
Symmetry **EXCELLENT**
Fluorescence **NONE**
Inscription(s) **IGI LG799643764**
Comments: As Grown - No indication of post-growth treatment.
This Laboratory Grown Diamond was created by High Pressure High Temperature (HPHT) growth process.
Type II



June 8, 2026
IGI Report No. **LG799643764**
PEAR BRILLIANT
8.59 X 5.50 X 3.52 MM
1.00 CARAT
D
VVS 2
64%
44.5%
15.5%
Medium to Slightly Thick (Faceted)
Pointed
EXCELLENT
EXCELLENT
NONE
IGI LG799643764
Comments: As Grown - No indication of post-growth treatment.
This Laboratory Grown Diamond was created by High Pressure High Temperature (HPHT) growth process.
Type II

LABORATORY GROWN DIAMOND REPORT

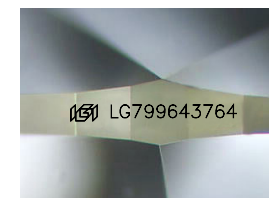
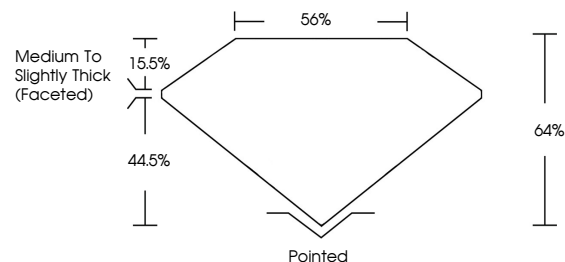
June 8, 2026
IGI Report Number **LG799643764**
Description **LABORATORY GROWN DIAMOND**
Shape and Cutting Style **PEAR BRILLIANT**
Measurements **8.59 X 5.50 X 3.52 MM**

GRADING RESULTS
Carat Weight **1.00 CARAT**
Color Grade **D**
Clarity Grade **VVS 2**

ADDITIONAL GRADING INFORMATION
Polish **EXCELLENT**
Symmetry **EXCELLENT**
Fluorescence **NONE**
Inscription(s) **IGI LG799643764**

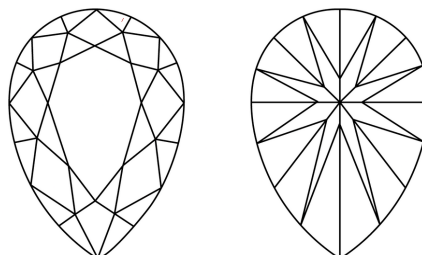
Comments: As Grown - No indication of post-growth treatment.
This Laboratory Grown Diamond was created by High Pressure High Temperature (HPHT) growth process.
Type II

PROPORTIONS



Sample Image Used

CLARITY CHARACTERISTICS



KEY TO SYMBOLS

Red symbols indicate internal characteristics.
Green symbols indicate external characteristics.

COLOR

D E F G H I J Faint Very Light Light

CLARITY

FL	IF	VVS ¹⁻²	VS ¹⁻²	SI ¹⁻²	I ¹⁻³
Flawless	Internally Flawless	Very Very Slightly Included	Very Slightly Included	Slightly Included	Included

