



ELECTRONIC COPY

LG799639638 Report verification at igi.org



June 1, 2026 IGI Report Number LG799639638 Description LABORATORY GROWN DIAMOND Shape and Cutting Style CUT CORNERED SQUARE MIXED CUT Measurements 6.80 X 6.79 X 4.72 MM GRADING RESULTS Carat Weight 2.06 CARATS Color Grade E Clarity Grade VVS 2

LABORATORY GROWN DIAMOND REPORT

June 1, 2026 IGI Report Number LG799639638 Description LABORATORY GROWN DIAMOND Shape and Cutting Style CUT CORNERED SQUARE MIXED CUT Measurements 6.80 X 6.79 X 4.72 MM

GRADING RESULTS

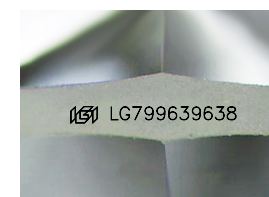
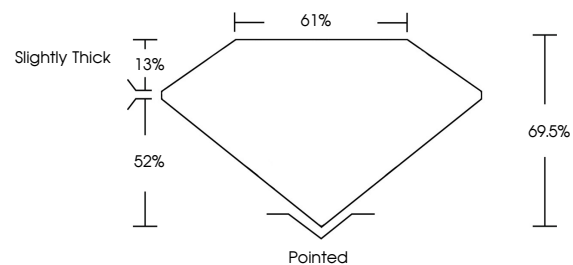
Carat Weight 2.06 CARATS Color Grade E Clarity Grade VVS 2

ADDITIONAL GRADING INFORMATION

Polish EXCELLENT Symmetry EXCELLENT Fluorescence NONE Inscription(s) IGI LG799639638

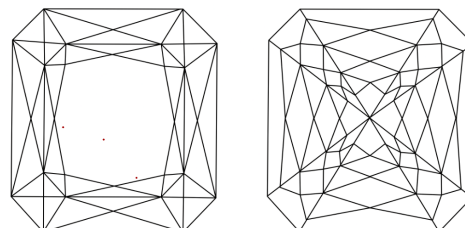
Comments: This Laboratory Grown Diamond was created by Chemical Vapor Deposition (CVD) growth process. Type IIa

PROPORTIONS



Sample Image Used

CLARITY CHARACTERISTICS



KEY TO SYMBOLS

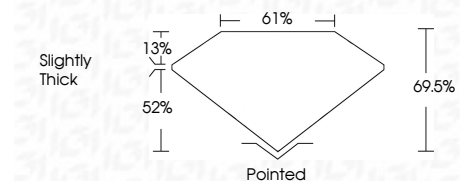
Red symbols indicate internal characteristics. Green symbols indicate external characteristics.

COLOR

D E F G H I J Faint Very Light Light

CLARITY

FL IF VVS 1-2 VS 1-2 SI 1-2 I 1-3 Flawless Internally Flawless Very Very Slightly Included Very Slightly Included Slightly Included Included



ADDITIONAL GRADING INFORMATION

Polish EXCELLENT Symmetry EXCELLENT Fluorescence NONE Inscription(s) IGI LG799639638 Comments: This Laboratory Grown Diamond was created by Chemical Vapor Deposition (CVD) growth process. Type IIa



June 1, 2026 IGI Report No LG799639638 CUT CORNERED SQUARE MIXED CUT 6.80 X 6.79 X 4.72 MM 2.06 CARATS E VVS 2 69.5% 61% Slightly Thick Pointed EXCELLENT EXCELLENT NONE NONE IGI LG799639638 Comments: This Laboratory Grown Diamond was created by Chemical Vapor Deposition (CVD) growth process. Type IIa