



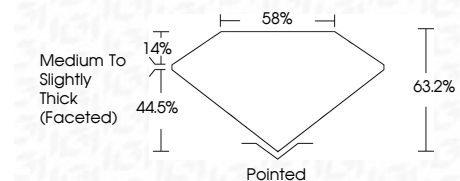
ELECTRONIC COPY

LG799639049 Report verification at igi.org



June 19, 2026 IGI Report Number LG799639049 Description LABORATORY GROWN DIAMOND Shape and Cutting Style MARQUISE BRILLIANT Measurements 10.37 X 5.27 X 3.33 MM

GRADING RESULTS Carat Weight 1.04 CARAT Color Grade D Clarity Grade FLAWLESS



ADDITIONAL GRADING INFORMATION Polish EXCELLENT Symmetry EXCELLENT Fluorescence NONE Inscription(s) LG799639049 Comments: As Grown - No indication of post-growth treatment. This Laboratory Grown Diamond was created by High Pressure High Temperature (HPHT) growth process. Type II



June 19, 2026 IGI Report No LG799639049 MARQUISE BRILLIANT 10.37 X 5.27 X 3.33 MM 1.04 CARAT D CARAT WEIGHT 1.04 CARAT COLOR GRADE D CLARITY GRADE FLAWLESS DEPTH 44.5% TABLE 14% GIRDLE Medium to Slightly Thick (Faceted) POINTED Culet Polished POLISHED POLISH EXCELLENT EXCELLENT SYMMETRY EXCELLENT EXCELLENT FLUORESCENCE NONE NONE FLUORESCENCE INSCRIPTION(S) LG799639049

Comments: As Grown - No indication of post-growth treatment. This Laboratory Grown Diamond was created by High Pressure High Temperature (HPHT) growth process. Type II

LABORATORY GROWN DIAMOND REPORT

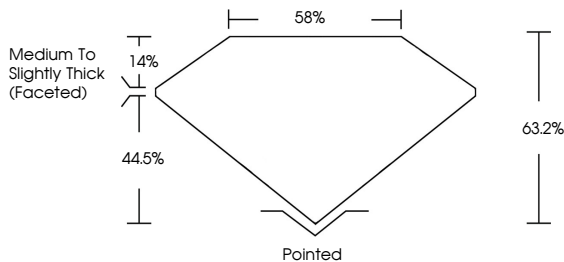
June 19, 2026 IGI Report Number LG799639049 Description LABORATORY GROWN DIAMOND Shape and Cutting Style MARQUISE BRILLIANT Measurements 10.37 X 5.27 X 3.33 MM

GRADING RESULTS Carat Weight 1.04 CARAT Color Grade D Clarity Grade FLAWLESS

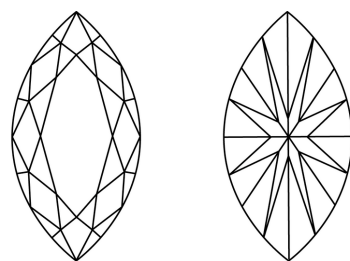
ADDITIONAL GRADING INFORMATION Polish EXCELLENT Symmetry EXCELLENT Fluorescence NONE Inscription(s) LG799639049

Comments: As Grown - No indication of post-growth treatment. This Laboratory Grown Diamond was created by High Pressure High Temperature (HPHT) growth process. Type II

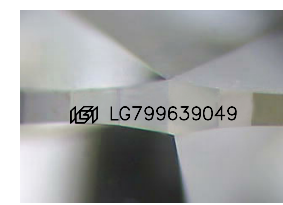
PROPORTIONS



CLARITY CHARACTERISTICS



KEY TO SYMBOLS Red symbols indicate internal characteristics. Green symbols indicate external characteristics.



Sample Image Used

Table with 10 columns: D, E, F, G, H, I, J, Faint, Very Light, Light

Table with 6 columns: FL, IF, VS 1-2, VS 1-2, SI 1-2, I 1-3

