



ELECTRONIC COPY

LABORATORY GROWN DIAMOND REPORT

June 17, 2026  
IGI Report Number LG799638529  
Description LABORATORY GROWN DIAMOND  
Shape and Cutting Style CUT CORNERED SQUARE MODIFIED BRILLIANT  
Measurements 8.36 X 8.03 X 5.26 MM

GRADING RESULTS

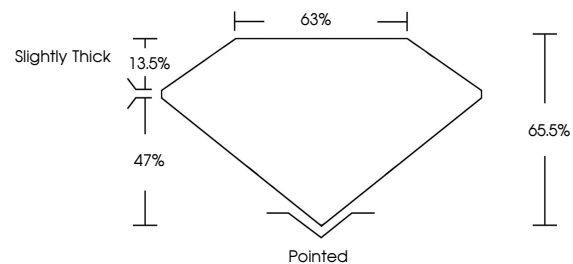
Carat Weight 3.30 CARATS  
Color Grade E  
Clarity Grade VVS 2

ADDITIONAL GRADING INFORMATION

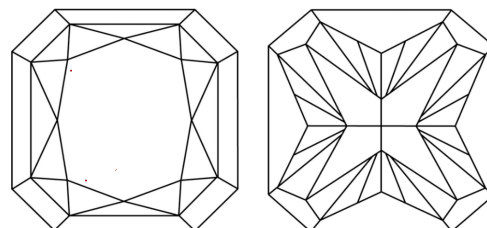
Polish EXCELLENT  
Symmetry EXCELLENT  
Fluorescence NONE  
Inscription(s) IGI LG799638529

Comments: This Laboratory Grown Diamond was created by Chemical Vapor Deposition (CVD) growth process.  
Type IIa

PROPORTIONS

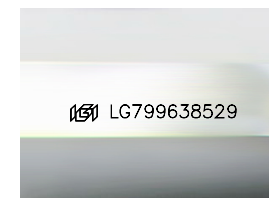


CLARITY CHARACTERISTICS



KEY TO SYMBOLS

Red symbols indicate internal characteristics.  
Green symbols indicate external characteristics.



Sample Image Used

COLOR

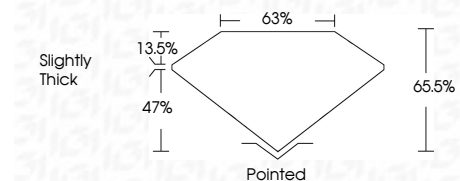
D E F G H I J Faint Very Light Light

CLARITY

FL IF VVS<sup>1-2</sup> VS<sup>1-2</sup> SI<sup>1-2</sup> I<sup>1-3</sup>  
Flawless Internally Flawless Very Very Slightly Included Very Slightly Included Slightly Included Included



June 17, 2026  
IGI Report Number LG799638529  
Description LABORATORY GROWN DIAMOND  
Shape and Cutting Style CUT CORNERED SQUARE MODIFIED BRILLIANT  
Measurements 8.36 X 8.03 X 5.26 MM  
GRADING RESULTS  
Carat Weight 3.30 CARATS  
Color Grade E  
Clarity Grade VVS 2



ADDITIONAL GRADING INFORMATION

Polish EXCELLENT  
Symmetry EXCELLENT  
Fluorescence NONE  
Inscription(s) IGI LG799638529  
Comments: This Laboratory Grown Diamond was created by Chemical Vapor Deposition (CVD) growth process.  
Type IIa



June 17, 2026  
IGI Report No. LG799638529  
CUT CORNERED SQUARE MODIFIED BRILLIANT  
8.36 X 8.03 X 5.26 MM  
3.30 CARATS E  
Color Grade E  
Clarity Grade VVS 2  
Depth 65.5%  
Table 63%  
Girdle Slightly Thick  
Culet Pointed  
Polish EXCELLENT  
Symmetry EXCELLENT  
Fluorescence NONE  
Inscription(s) IGI LG799638529  
Comments: This Laboratory Grown Diamond was created by Chemical Vapor Deposition (CVD) growth process.  
Type IIa