



ELECTRONIC COPY

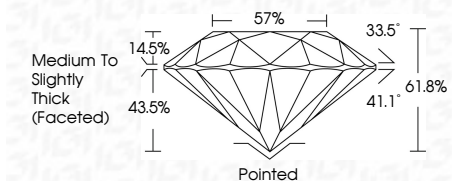
LG799637635 Report verification at igi.org



June 17, 2026 IGI Report Number LG799637635 Description LABORATORY GROWN DIAMOND Shape and Cutting Style ROUND BRILLIANT Measurements 6.47 - 6.50 X 4.01 MM

GRADING RESULTS

Carat Weight 1.03 CARAT Color Grade D Clarity Grade VVS 1 Cut Grade IDEAL



ADDITIONAL GRADING INFORMATION

Polish EXCELLENT Symmetry EXCELLENT Fluorescence NONE Inscription(s) LG799637635 Comments: As Grown - No indication of post-growth treatment. This Laboratory Grown Diamond was created by High Pressure High Temperature (HPHT) growth process. Type II



June 17, 2026 IGI Report No LG799637635 ROUND BRILLIANT 6.47 - 6.50 X 4.01 MM 1.03 CARAT D VVS 1 IDEAL 61.8% 57% Medium To Slightly Thick (Faceted) Pointed EXCELLENT EXCELLENT NONE NONE LG799637635

Comments: As Grown - No indication of post-growth treatment. This Laboratory Grown Diamond was created by High Pressure High Temperature (HPHT) growth process. Type II

LABORATORY GROWN DIAMOND REPORT

June 17, 2026 IGI Report Number LG799637635 Description LABORATORY GROWN DIAMOND Shape and Cutting Style ROUND BRILLIANT Measurements 6.47 - 6.50 X 4.01 MM

GRADING RESULTS

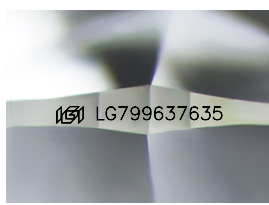
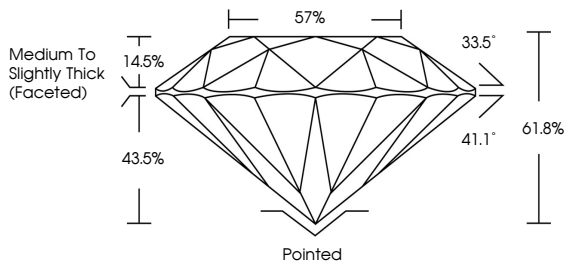
Carat Weight 1.03 CARAT Color Grade D Clarity Grade VVS 1 Cut Grade IDEAL

ADDITIONAL GRADING INFORMATION

Polish EXCELLENT Symmetry EXCELLENT Fluorescence NONE Inscription(s) LG799637635

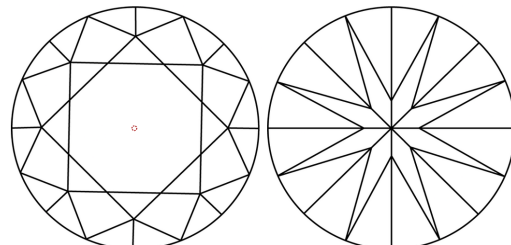
Comments: As Grown - No indication of post-growth treatment. This Laboratory Grown Diamond was created by High Pressure High Temperature (HPHT) growth process. Type II

PROPORTIONS



Sample Image Used

CLARITY CHARACTERISTICS



KEY TO SYMBOLS

Red symbols indicate internal characteristics. Green symbols indicate external characteristics.

COLOR

Color scale table with categories D, E, F, G, H, I, J, Faint, Very Light, Light

CLARITY

Clarity scale table with categories FL, IF, VVS 1-2, VS 1-2, SI 1-2, I 1-3, Flawless, Internally Flawless, Very Very Slightly Included, Very Slightly Included, Slightly Included, Included

