



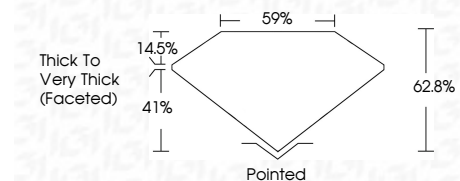
ELECTRONIC COPY

LG799636932
Report verification at igi.org



June 15, 2026
IGI Report Number **LG799636932**
Description **LABORATORY GROWN DIAMOND**
Shape and Cutting Style **PEAR MODIFIED BRILLIANT**
Measurements **9.57 X 6.02 X 3.78 MM**

GRADING RESULTS
Carat Weight **1.60 CARAT**
Color Grade **FANCY VIVID PINK**
Clarity Grade **VS 2**



ADDITIONAL GRADING INFORMATION
Polish **VERY GOOD**
Symmetry **VERY GOOD**
Fluorescence **SLIGHT**
Inscription(s) **IGI LG799636932**
Comments: This Laboratory Grown Diamond was created by Chemical Vapor Deposition (CVD) growth process. Indications of post-growth treatment.



June 15, 2026
IGI Report No. LG799636932
PEAR MODIFIED BRILLIANT
9.57 X 6.02 X 3.78 MM
1.60 CARAT
FANCY VIVID PINK
VS 2
62.8%
41%
14.5%
Pointed
VERY GOOD
VERY GOOD
SLIGHT
IGI LG799636932
Comments: This Laboratory Grown Diamond was created by Chemical Vapor Deposition (CVD) growth process. Indications of post-growth treatment.

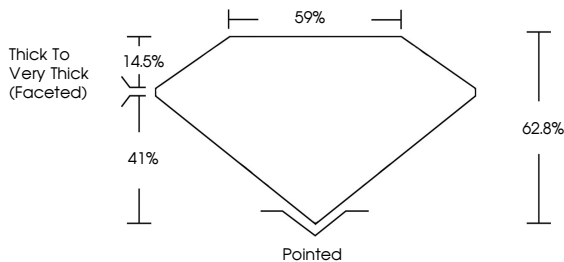
June 15, 2026
IGI Report Number **LG799636932**
Description **LABORATORY GROWN DIAMOND**
Shape and Cutting Style **PEAR MODIFIED BRILLIANT**
Measurements **9.57 X 6.02 X 3.78 MM**

GRADING RESULTS
Carat Weight **1.60 CARAT**
Color Grade **FANCY VIVID PINK**
Clarity Grade **VS 2**

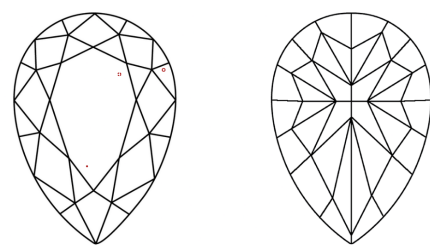
ADDITIONAL GRADING INFORMATION
Polish **VERY GOOD**
Symmetry **VERY GOOD**
Fluorescence **SLIGHT**
Inscription(s) **IGI LG799636932**

Comments: This Laboratory Grown Diamond was created by Chemical Vapor Deposition (CVD) growth process. Indications of post-growth treatment.

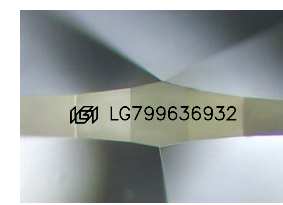
PROPORTIONS



CLARITY CHARACTERISTICS



KEY TO SYMBOLS
Red symbols indicate internal characteristics.
Green symbols indicate external characteristics.



Sample Image Used

COLOR

D	E	F	G	H	I	J	Faint	Very Light	Light
---	---	---	---	---	---	---	-------	------------	-------

CLARITY

FL	IF	VS ¹⁻²	VS ¹⁻²	SI ¹⁻²	I ¹⁻³
Flawless	Internally Flawless	Very Very Slightly Included	Very Slightly Included	Slightly Included	Included

