



ELECTRONIC COPY

LG799636785
Report verification at igi.org



June 11, 2026
IGI Report Number LG799636785
Description LABORATORY GROWN DIAMOND
Shape and Cutting Style CUT CORNERED RECTANGULAR MODIFIED BRILLIANT
Measurements 10.29 X 7.06 X 4.74 MM
GRADING RESULTS
Carat Weight 3.00 CARATS
Color Grade F
Clarity Grade VS 1

LABORATORY GROWN DIAMOND REPORT

June 11, 2026
IGI Report Number LG799636785
Description LABORATORY GROWN DIAMOND
Shape and Cutting Style CUT CORNERED RECTANGULAR MODIFIED BRILLIANT
Measurements 10.29 X 7.06 X 4.74 MM

GRADING RESULTS

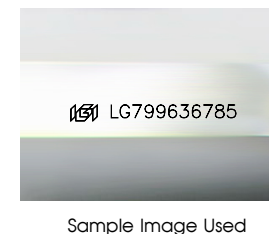
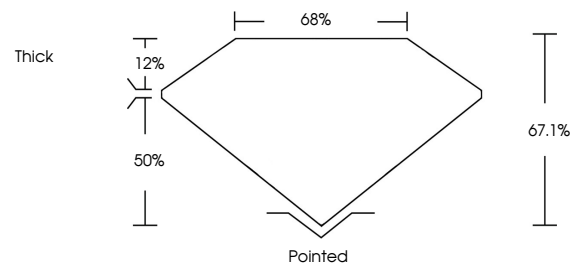
Carat Weight 3.00 CARATS
Color Grade F
Clarity Grade VS 1

ADDITIONAL GRADING INFORMATION

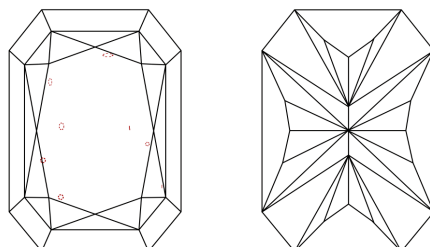
Polish EXCELLENT
Symmetry EXCELLENT
Fluorescence NONE
Inscription(s) LG799636785

Comments: This Laboratory Grown Diamond was created by Chemical Vapor Deposition (CVD) growth process. Type IIa

PROPORTIONS



CLARITY CHARACTERISTICS



KEY TO SYMBOLS

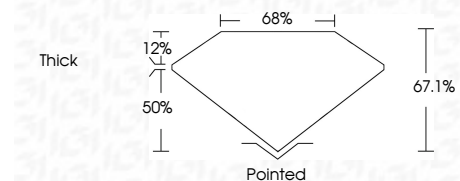
Red symbols indicate internal characteristics.
Green symbols indicate external characteristics.

COLOR

D E F G H I J Faint Very Light Light

CLARITY

FL IF VS 1-2 VS 2-2 SI 1-2 I 1-3
Flawless Internally Flawless Very Very Slightly Included Very Slightly Included Slightly Included Included



ADDITIONAL GRADING INFORMATION

Polish EXCELLENT
Symmetry EXCELLENT
Fluorescence NONE
Inscription(s) LG799636785
Comments: This Laboratory Grown Diamond was created by Chemical Vapor Deposition (CVD) growth process. Type IIa



June 11, 2026
IGI Report No LG799636785
CUT CORNERED RECT. MODIFIED BRILLIANT
10.29 X 7.06 X 4.74 MM
3.00 CARATS
F
VS 1
67.1%
50%
Thick
Pointed
EXCELLENT
EXCELLENT
NONE
IGI LG799636785
Comments: This Laboratory Grown Diamond was created by Chemical Vapor Deposition (CVD) growth process. Type IIa