



**ELECTRONIC COPY**

LG799636525  
Report verification at igi.org



June 11, 2026  
IGI Report Number **LG799636525**  
Description **LABORATORY GROWN DIAMOND**  
Shape and Cutting Style **CUT CORNERED  
RECTANGULAR MODIFIED  
BRILLIANT**  
Measurements **10.83 X 7.74 X 5.36 MM**  
**GRADING RESULTS**  
Carat Weight **4.05 CARATS**  
Color Grade **F**  
Clarity Grade **VS 1**

June 11, 2026  
IGI Report Number **LG799636525**  
Description **LABORATORY GROWN DIAMOND**  
Shape and Cutting Style **CUT CORNERED RECTANGULAR  
MODIFIED BRILLIANT**  
Measurements **10.83 X 7.74 X 5.36 MM**

**GRADING RESULTS**

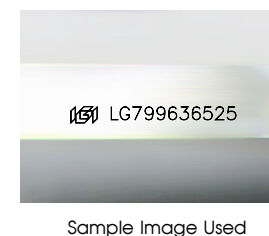
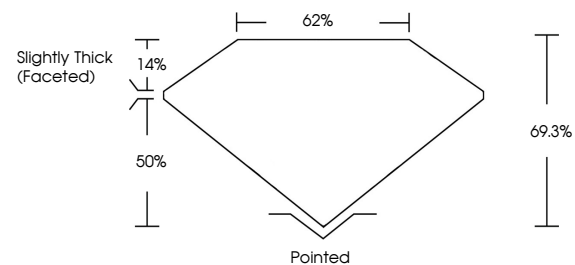
Carat Weight **4.05 CARATS**  
Color Grade **F**  
Clarity Grade **VS 1**

**ADDITIONAL GRADING INFORMATION**

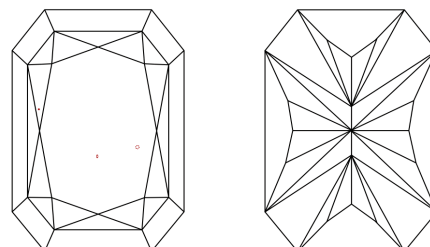
Polish **EXCELLENT**  
Symmetry **EXCELLENT**  
Fluorescence **NONE**  
Inscription(s) **IGI LG799636525**

Comments: This Laboratory Grown Diamond was created by Chemical Vapor Deposition (CVD) growth process. Type IIa

**PROPORTIONS**



**CLARITY CHARACTERISTICS**



**KEY TO SYMBOLS**

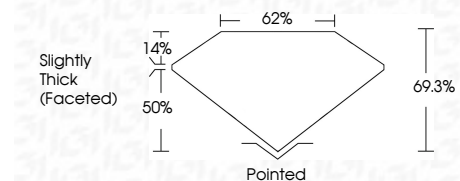
Red symbols indicate internal characteristics.  
Green symbols indicate external characteristics.

**COLOR**

D E F G H I J Faint Very Light Light

**CLARITY**

FL	IF	VS <sup>1-2</sup>	VS <sup>1-2</sup>	SI <sup>1-2</sup>	I <sup>1-3</sup>
Flawless	Internally Flawless	Very Very Slightly Included	Very Slightly Included	Slightly Included	Included



**ADDITIONAL GRADING INFORMATION**

Polish **EXCELLENT**  
Symmetry **EXCELLENT**  
Fluorescence **NONE**  
Inscription(s) **IGI LG799636525**  
Comments: This Laboratory Grown Diamond was created by Chemical Vapor Deposition (CVD) growth process. Type IIa



June 11, 2026  
IGI Report No. **LG799636525**  
**CUT CORNERED RECT. MODIFIED BRILLIANT**  
**10.83 X 7.74 X 5.36 MM**  
Carat Weight **4.05 CARATS**  
Color Grade **F**  
Clarity Grade **VS 1**  
Depth **69.3%**  
Table **62%**  
Girdle **Slightly Thick (Faceted)**  
Culet **Pointed**  
Polish **EXCELLENT**  
Symmetry **EXCELLENT**  
Fluorescence **NONE**  
Inscription(s) **IGI LG799636525**  
Comments: This Laboratory Grown Diamond was created by Chemical Vapor Deposition (CVD) growth process. Type IIa