



ELECTRONIC COPY

LG799636460 Report verification at igi.org

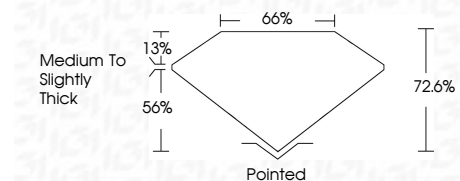


June 10, 2026 IGI Report Number LG799636460 Description LABORATORY GROWN DIAMOND Shape and Cutting Style CUT CORNERED RECTANGULAR MODIFIED BRILLIANT

Measurements 7.07 X 4.78 X 3.47 MM

GRADING RESULTS

Carat Weight 1.01 CARAT Color Grade D Clarity Grade VVS 2



ADDITIONAL GRADING INFORMATION

Polish EXCELLENT Symmetry EXCELLENT Fluorescence NONE Inscription(s) LG799636460

Comments: As Grown - No indication of post-growth treatment. This Laboratory Grown Diamond was created by High Pressure High Temperature (HPHT) growth process. Type II



June 10, 2026 IGI Report No LG799636460 CUT CORNERED RECT. MODIFIED BRILLIANT 1.01 CARAT D VVS 2 72.6% 56% Medium to Slightly Thick Pointed EXCELLENT EXCELLENT NONE NONE LG799636460

Comments: As Grown - No indication of post-growth treatment. This Laboratory Grown Diamond was created by High Pressure High Temperature (HPHT) growth process. Type II

LABORATORY GROWN DIAMOND REPORT

June 10, 2026 IGI Report Number LG799636460 Description LABORATORY GROWN DIAMOND Shape and Cutting Style CUT CORNERED RECTANGULAR MODIFIED BRILLIANT Measurements 7.07 X 4.78 X 3.47 MM

GRADING RESULTS

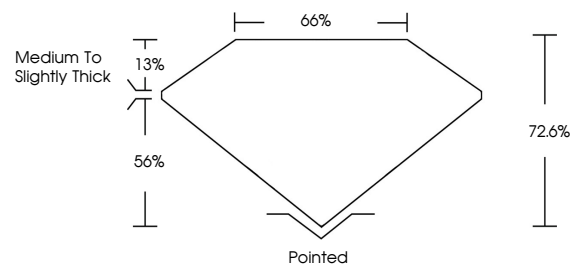
Carat Weight 1.01 CARAT Color Grade D Clarity Grade VVS 2

ADDITIONAL GRADING INFORMATION

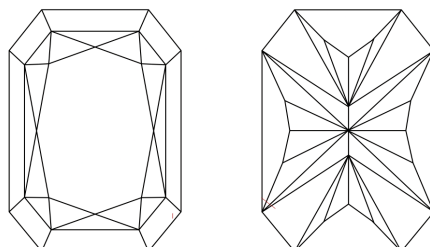
Polish EXCELLENT Symmetry EXCELLENT Fluorescence NONE Inscription(s) LG799636460

Comments: As Grown - No indication of post-growth treatment. This Laboratory Grown Diamond was created by High Pressure High Temperature (HPHT) growth process. Type II

PROPORTIONS

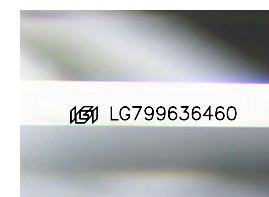


CLARITY CHARACTERISTICS



KEY TO SYMBOLS

Red symbols indicate internal characteristics. Green symbols indicate external characteristics.



Sample Image Used

COLOR

D E F G H I J Faint Very Light Light

CLARITY

FL IF VVS 1-2 VS 1-2 SI 1-2 I 1-3 Flawless Internally Flawless Very Very Slightly Included Very Slightly Included Slightly Included Included