



ELECTRONIC COPY

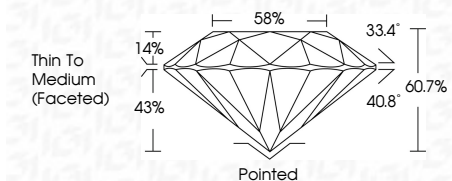
LG799635536 Report verification at igi.org



June 24, 2026 IGI Report Number LG799635536 Description LABORATORY GROWN DIAMOND Shape and Cutting Style ROUND BRILLIANT Measurements 7.50 - 7.55 X 4.56 MM

GRADING RESULTS

Carat Weight 1.58 CARAT Color Grade F Clarity Grade VVS 2 Cut Grade IDEAL



ADDITIONAL GRADING INFORMATION

Polish EXCELLENT Symmetry EXCELLENT Fluorescence NONE Inscription(s) LG799635536 Comments: This Laboratory Grown Diamond was created by Chemical Vapor Deposition (CVD) growth process. Type IIa



June 24, 2026 IGI Report No LG799635536 ROUND BRILLIANT 7.50 - 7.55 X 4.56 MM 1.58 CARAT F VVS 2 IDEAL 60.7% 58% Thin To Medium (Faceted) Pointed EXCELLENT EXCELLENT NONE NONE LG799635536

June 24, 2026 IGI Report Number LG799635536 Description LABORATORY GROWN DIAMOND Shape and Cutting Style ROUND BRILLIANT Measurements 7.50 - 7.55 X 4.56 MM

GRADING RESULTS

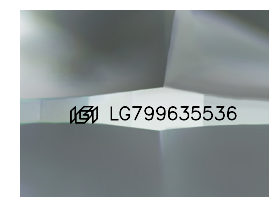
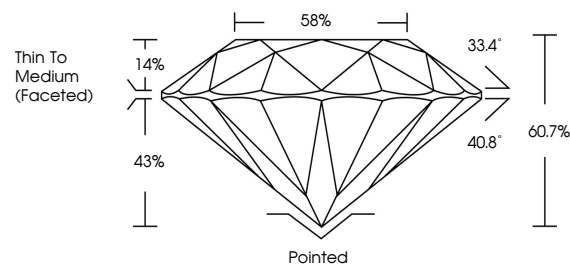
Carat Weight 1.58 CARAT Color Grade F Clarity Grade VVS 2 Cut Grade IDEAL

ADDITIONAL GRADING INFORMATION

Polish EXCELLENT Symmetry EXCELLENT Fluorescence NONE Inscription(s) LG799635536

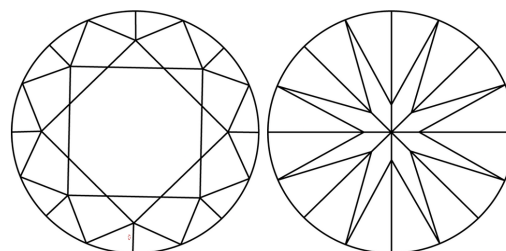
Comments: This Laboratory Grown Diamond was created by Chemical Vapor Deposition (CVD) growth process. Type IIa

PROPORTIONS



Sample Image Used

CLARITY CHARACTERISTICS



KEY TO SYMBOLS

Red symbols indicate internal characteristics. Green symbols indicate external characteristics.

COLOR

D E F G H I J Faint Very Light Light

CLARITY

FL IF VVS 1-2 VS 1-2 SI 1-2 I 1-3 Flawless Internally Flawless Very Very Slightly Included Very Slightly Included Slightly Included Included