



ELECTRONIC COPY

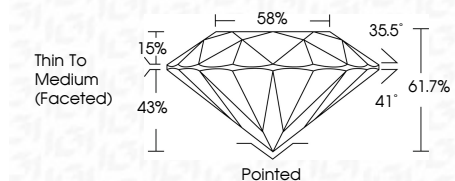
LG799635449
Report verification at igi.org



June 24, 2026
IGI Report Number LG799635449
Description LABORATORY GROWN DIAMOND
Shape and Cutting Style ROUND BRILLIANT
Measurements 6.42 - 6.47 X 3.97 MM

GRADING RESULTS

Carat Weight 1.00 CARAT
Color Grade F
Clarity Grade VVS 2
Cut Grade IDEAL



ADDITIONAL GRADING INFORMATION

Polish EXCELLENT
Symmetry EXCELLENT
Fluorescence NONE
Inscription(s) IGI LG799635449
Comments: This Laboratory Grown Diamond was created by Chemical Vapor Deposition (CVD) growth process. Type IIa



Summary table of diamond characteristics including Carat Weight, Color Grade, Clarity Grade, Depth, Table, Girdle, and Cut/Polish/Symmetry/Fluorescence/Inscriptions.

June 24, 2026
IGI Report Number LG799635449
Description LABORATORY GROWN DIAMOND
Shape and Cutting Style ROUND BRILLIANT
Measurements 6.42 - 6.47 X 3.97 MM

GRADING RESULTS

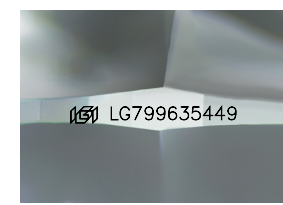
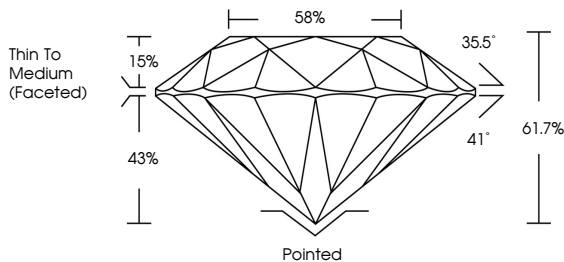
Carat Weight 1.00 CARAT
Color Grade F
Clarity Grade VVS 2
Cut Grade IDEAL

ADDITIONAL GRADING INFORMATION

Polish EXCELLENT
Symmetry EXCELLENT
Fluorescence NONE
Inscription(s) IGI LG799635449

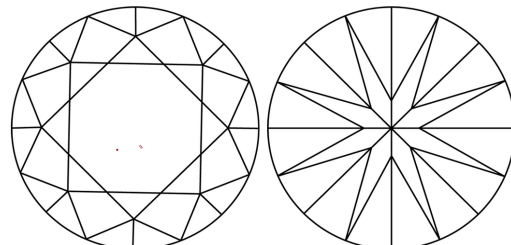
Comments: This Laboratory Grown Diamond was created by Chemical Vapor Deposition (CVD) growth process. Type IIa

PROPORTIONS



Sample Image Used

CLARITY CHARACTERISTICS



KEY TO SYMBOLS

Red symbols indicate internal characteristics.
Green symbols indicate external characteristics.

COLOR

Color scale table from D to J, including Faint, Very Light, and Light.

CLARITY

Clarity scale table from FL to I 1-3, including Internally Flawless, Very Slightly Included, Slightly Included, and Included.

