



ELECTRONIC COPY

LG799635288
Report verification at igi.org



June 19, 2026
IGI Report Number LG799635288
Description LABORATORY GROWN DIAMOND
Shape and Cutting Style ROUND BRILLIANT
Measurements 8.42 - 8.46 X 5.20 MM
GRADING RESULTS
Carat Weight 2.27 CARATS
Color Grade VERY LIGHT BROWN
Clarity Grade VS 1
Cut Grade IDEAL

June 19, 2026
IGI Report Number LG799635288
Description LABORATORY GROWN DIAMOND
Shape and Cutting Style ROUND BRILLIANT
Measurements 8.42 - 8.46 X 5.20 MM

GRADING RESULTS

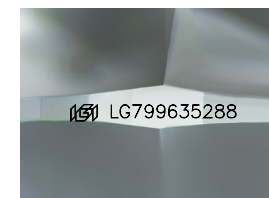
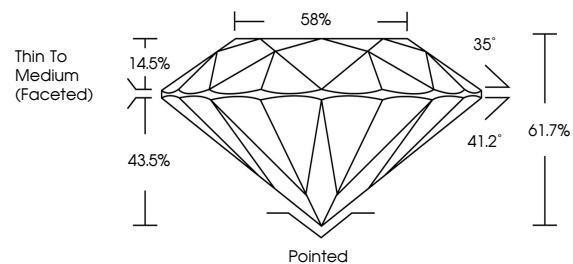
Carat Weight 2.27 CARATS
Color Grade VERY LIGHT BROWN
Clarity Grade VS 1
Cut Grade IDEAL

ADDITIONAL GRADING INFORMATION

Polish EXCELLENT
Symmetry EXCELLENT
Fluorescence VERY SLIGHT
Inscription(s) IGI LG799635288

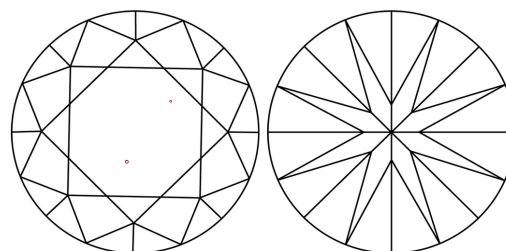
Comments: This Laboratory Grown Diamond was created by Chemical Vapor Deposition (CVD) growth process. Type IIa

PROPORTIONS



Sample Image Used

CLARITY CHARACTERISTICS



KEY TO SYMBOLS

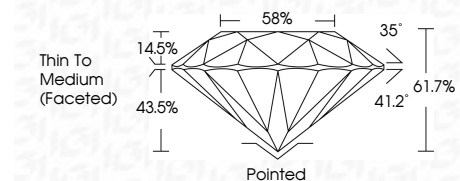
Red symbols indicate internal characteristics.
Green symbols indicate external characteristics.

COLOR

D E F G H I J Faint Very Light Light

CLARITY

Table with columns: FL, IF, VS 1-2, VS 1-2, SI 1-2, I 1-3. Rows: Flawless, Internally Flawless, Very Very Slightly Included, Very Slightly Included, Slightly Included, Included



ADDITIONAL GRADING INFORMATION

Polish EXCELLENT
Symmetry EXCELLENT
Fluorescence VERY SLIGHT
Inscription(s) IGI LG799635288
Comments: This Laboratory Grown Diamond was created by Chemical Vapor Deposition (CVD) growth process. Type IIa



IGI



June 19, 2026
IGI Report No LG799635288
ROUND BRILLIANT
8.42 - 8.46 X 5.20 MM
2.27 CARATS
VERY LIGHT BROWN
VS 1
IDEAL
61.7%
58%
Thin To Medium (Faceted)
Pointed
EXCELLENT
EXCELLENT
VERY SLIGHT
IGI LG799635288
Comments: This Laboratory Grown Diamond was created by Chemical Vapor Deposition (CVD) growth process. Type IIa