



ELECTRONIC COPY

LG799635287
Report verification at igi.org



June 19, 2026
IGI Report Number **LG799635287**
Description **LABORATORY GROWN DIAMOND**
Shape and Cutting Style **ROUND BRILLIANT**
Measurements **8.18 - 8.21 X 4.93 MM**
GRADING RESULTS
Carat Weight **2.01 CARATS**
Color Grade **VERY LIGHT BROWN**
Clarity Grade **VS 1**
Cut Grade **IDEAL**

June 19, 2026
IGI Report Number **LG799635287**
Description **LABORATORY GROWN DIAMOND**
Shape and Cutting Style **ROUND BRILLIANT**
Measurements **8.18 - 8.21 X 4.93 MM**

GRADING RESULTS

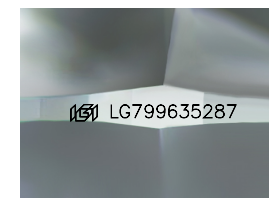
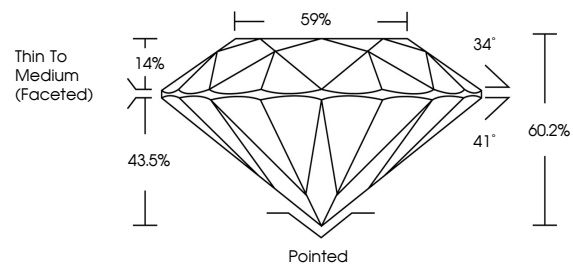
Carat Weight **2.01 CARATS**
Color Grade **VERY LIGHT BROWN**
Clarity Grade **VS 1**
Cut Grade **IDEAL**

ADDITIONAL GRADING INFORMATION

Polish **VERY GOOD**
Symmetry **EXCELLENT**
Fluorescence **VERY SLIGHT**
Inscription(s) **IGI LG799635287**

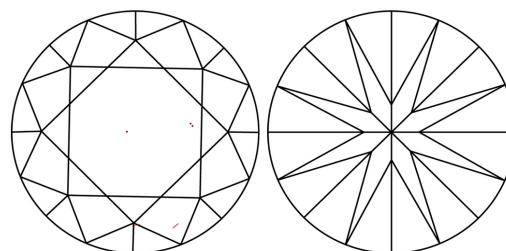
Comments: This Laboratory Grown Diamond was created by Chemical Vapor Deposition (CVD) growth process.
Type IIa

PROPORTIONS



Sample Image Used

CLARITY CHARACTERISTICS



KEY TO SYMBOLS

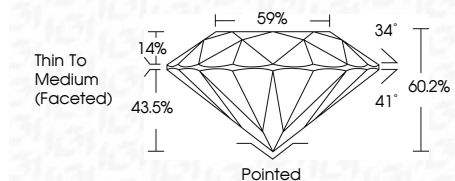
Red symbols indicate internal characteristics.
Green symbols indicate external characteristics.

COLOR

D E F G H I J Faint Very Light Light

CLARITY

FL	IF	VS ¹⁻²	VS ¹⁻²	SI ¹⁻²	I ¹⁻³
Flawless	Internally Flawless	Very Very Slightly Included	Very Slightly Included	Slightly Included	Included



ADDITIONAL GRADING INFORMATION

Polish **VERY GOOD**
Symmetry **EXCELLENT**
Fluorescence **VERY SLIGHT**
Inscription(s) **IGI LG799635287**
Comments: This Laboratory Grown Diamond was created by Chemical Vapor Deposition (CVD) growth process.
Type IIa



June 19, 2026
IGI Report No LG799635287
ROUND BRILLIANT
8.18 - 8.21 X 4.93 MM
2.01 CARATS
VERY LIGHT BROWN
VS 1
IDEAL
60.2%
59%
Thin To Medium (Faceted)
Pointed
Culet **VERY GOOD**
Polish **EXCELLENT**
Symmetry **VERY SLIGHT**
Fluorescence **VERY SLIGHT**
Inscription(s) **IGI LG799635287**
Comments: This Laboratory Grown Diamond was created by Chemical Vapor Deposition (CVD) growth process.
Type IIa